

Service Manual

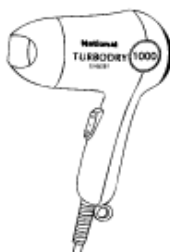
[TOP](#) [NEXT](#)

ORDER NO. PCD0106A84C3

Service Manual

Hair Dryer

- EH5281-A3



SPECIFICATIONS

Power source	AC110V,220-240V/50-60Hz	Air volume	0.8 m ³ /min (II)
	(Separately available)	Air flow temperature	110V...105°C(II)
Power consumption			220 - 240V...105°C(II)
	II...110V,230V 1000W		(in case of room temperature 30°C)
	220V 930W	Cord length	1.75 m
	240V 1100W	Weight	370g (with nozzle)
	I...110V 500W		
	220V 450W		
	230V 500W		
	240V 550W		

© 2001 Matsushita Electric Works(Thailand) Ltd. All rights reserved. Unauthorized copying and distribution is a violation of law.

WARNING

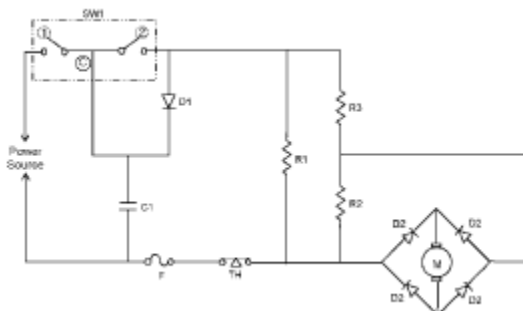
This service information is designed for experienced repair technicians only and is not designed for use by the general public. It does not contain warnings or cautions to advise non-technical individuals of potential dangers in attempting to service a product. Products powered by electricity should be serviced or repaired only by experienced professional technicians. Any attempt to service or repair the product or products dealt with in this service information by anyone else could result in serious injury or death.



[TOP](#) [NEXT](#)

1 SCHEMATIC DIAGRAM

[TOP](#) [PREVIOUS](#) [NEXT](#)



SW1 Main switch(ARG-1213-01-003)

	C-1	C-2
0	X	X
I	O	X
II	O	O

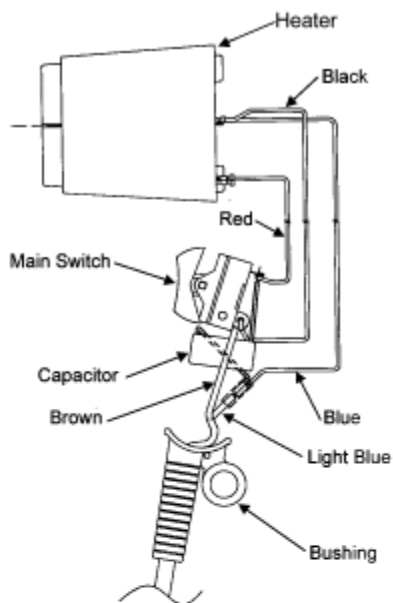
O = ON
X = OFF

		110V TAIWAN	220V KOREA	220-240V
C1	CAPACITOR	0.1mF, 250V		NOT USE
D1	DIODE	5A, 600V		
D2x4	DIODE	1A, 400V		
F	TEMPERATURE FUSE	147C°, 12A, 250V		
M	MOTOR	15VDC, 1.37A		
SW1	MAIN SWITCH	AC 125V, 13A/250V, 6.5A		
R1//((R2+R3)	HEATER COIL	12.3±0.5W	-	
(R2)		4.2±0.2W	5.3±0.2W	
R2+R3		-	52.0±1.5W	
R1		-	NOT USE	
TH	THERMO SWITCH	125V, 12A / 250V, 6A 120C		

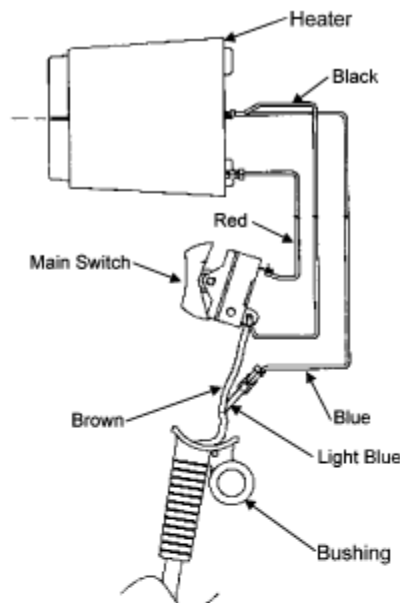
[TOP](#) [PREVIOUS](#) [NEXT](#)

2 WIRING CONNECTION DIAGRAM

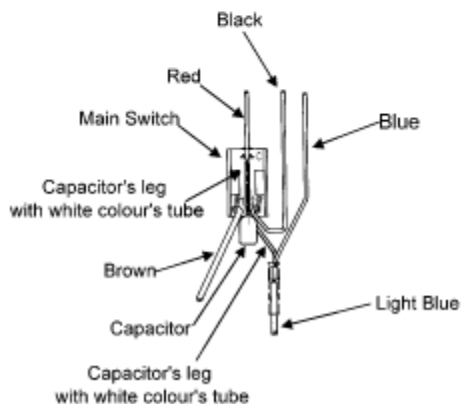
[TOP](#) [PREVIOUS](#) [NEXT](#)



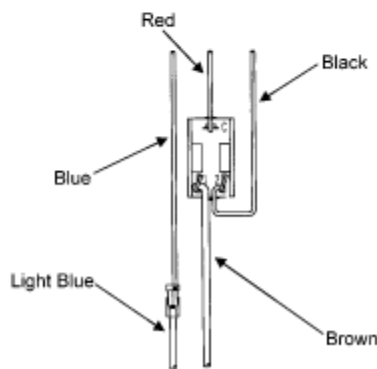
< For TAIWAN and KOREA ONLY >



< For Other >



< Main Switch for TAIWAN and KOREA ONLY >



< Main Switch for Other >

[TOP](#) [PREVIOUS](#) [NEXT](#)

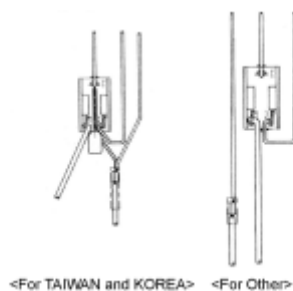
3 ASSEMBLY INSTRUCTIONS

[TOP](#) [PREVIOUS](#) [NEXT](#)

*** Caution for soldering lead wire on switch.**

Location and orientation of lead wire must be as shown in [Fig.1](#)

Fig.1



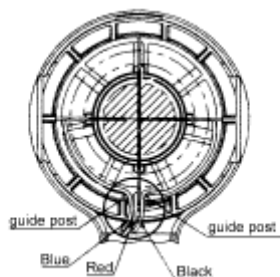
1. Assembly the heater into the slots of air flow regulator assembly as show in [Fig.2](#)

Fig.2



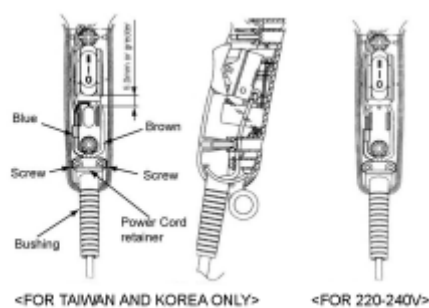
2. Insert the red, black and blue lead wire between the guide post of air flow assembly as shown in [Fig.3](#)

Fig.3



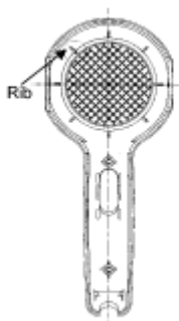
3. Install the switch at the position as show in the [Fig.4](#)
4. The position of all lead wires as show in the [Fig.4](#)
5. Set power cord, bushing and drive 2 screws at power cord retainer as show in the [Fig.4](#)

Fig.4



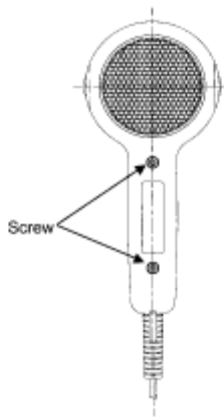
6. Set air outlet grill and outlet ring to heater block by align rib of air outlet ring with slot of housingA as shown in [Fig.5](#)

Fig.5



7. Assembly the housing with 2 screws at main body as shown in [Fig.6](#)

Fig.6



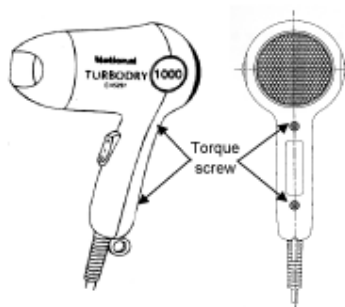
[TOP](#) [PREVIOUS](#) [NEXT](#)

4 DISASSEMBLY INSTRUCTIONS

[TOP](#) [PREVIOUS](#) [NEXT](#)

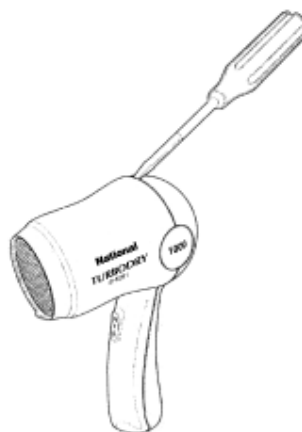
1. Remove the 2 torque screws from main body with a torque head driver as shown in [Fig.7](#) .

Fig.7



2. Remove hooks of housing AB with a slotted screwdriver as shown in [Fig.8](#)
3. Pull out the housing.
4. Remove 2 tapping screw from holding power cord retainer.
5. Remove the heater block and main switch.

Fig.8



[TOP](#) [PREVIOUS](#) [NEXT](#)

5 TROUBLESHOOTING GUIDE

[TOP](#) [PREVIOUS](#) [NEXT](#)

*Refer to [WIRING CONNECTION DIAGRAM](#) .

< TROUBLE >	< CHECK >	< REMEDY >
Hot air is not emitted →	Check continuity of power cord.	→ Replace power cord.
at "II" or "I" position.		NO
	↓OK	
	position of main switch.	→ Replace main switch.
	Check continuity between (C) and (1), between (C) and (2) at "II" position of	NO
	main switch.	
	(probe "+" of tester at (C), "-" of tester at (2) only)	
	↓OK	
	Check the resistance of heater coil between blue lead wire and black lead	→ Replace heater block.
	wire of heater block.	NO
	The value should be as follows :	
	220~240V :approx. 52.0Ω, 110V :approx. 12.3Ω	
	↓OK	
	Check the motor rotates when adding DC15V to motor terminal.	→ Replace motor.
		NO

[TOP](#) [PREVIOUS](#) [NEXT](#)

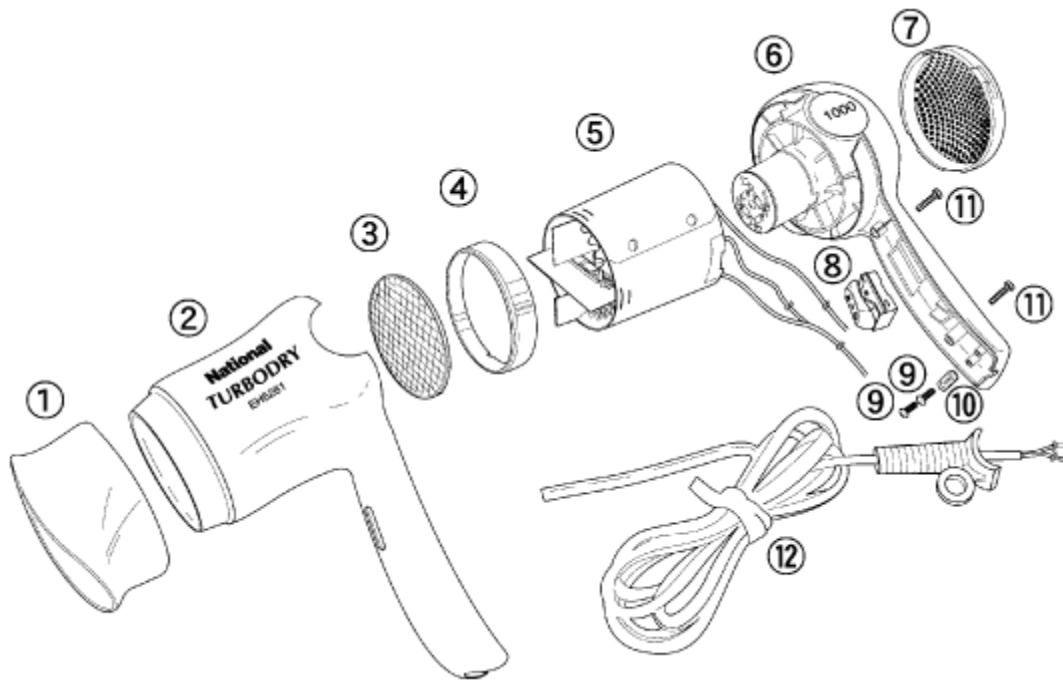
6 EXPLODED VIEW& REPLACEMENT PARTS LIST

[TOP](#) [PREVIOUS](#) [NEXT](#)

[6.1 EXPLODED VIEW](#)

[6.2 REPLACEMENT PARTS LIST](#)

[TOP](#) [PREVIOUS](#) [NEXT](#)



6.2 REPLACEMENT PARTS LIST

[TOP](#) [PREVIOUS](#)

NOTES: All parts are supplied from MEW–Thailand through PPCA.

Remarks: *1 = Available individually.

Ref. No.	Part No.	Part Name & Description	Remarks	Per Unit
<u>1</u>	EH5281NZPW	NOZZLE	PINK	1
1	EH5281NZVW	NOZZLE	VIOLET	1
<u>2</u>	EH5281HSAPW	HOUSING A	PINK	1
2	EH5281HSAVW	HOUSING A	VIOLET	1
<u>3</u>	EH5281AOGW	AIR OUTLET GRILL		1
<u>4</u>	EH5281AORW	AIR OUTLET RING		1
<u>5</u>	EH5281HB11W	HEATER BLOCK ASS'Y	FOR TAIWAN	1
5	EH5281HB22W	HEATER BLOCK ASS'Y	FOR OTHERS	1
<u>6</u>	EH5281HSM1PW	HOUSING B WITH MOTOR REC. B/K	PINK TAIWAN	1
6	EH5281HSM9PW	HOUSING B WITH MOTOR REC. B/K	PINK KOREA	1
6	EH5281HSM2PW	HOUSING B WITH MOTOR REC. B/K	PINK OTHERS	1
6	EH5281HSM1VW	HOUSING B WITH MOTOR REC. B/K	VIOLET TAIWAN	1
6	EH5281HSM9VW	HOUSING B WITH MOTOR REC. B/K	VIOLET KOREA	1
6	EH5281HSM2VW	HOUSING B WITH MOTOR REC. B/K	VIOLET OTHERS	1
<u>7</u>	EH5281AIGPW	AIR INLET GRILL	PINK	1
7	EH5281AIGVW	AIR INLET GRILL	VIOLET	1
<u>8</u>	EH5281SWPW	SWITCH PUSH BUTTON	PINK	1
8	EH5281SWVW	SWITCH PUSH BUTTON	VIOLET	1
<u>9</u>	EH5281T3080W	TAPPING SCREW 3*8	*1	2
<u>10</u>	EH5281PCRLW	POWER CORD RETAINER		1
<u>11</u>	EH5281T3012W	TAPPING SCREW 3*12	*1	2
<u>12</u>	EH5281PCA2W	POWER CORD ASS'Y	A2 PLUG	1
12	EH5281PCS3W	POWER CORD ASS'Y	S3 PLUG	1
12	EH5281PCC2W	POWER CORD ASS'Y	C2 PLUG	1
12	EH5281PCB2W	POWER CORD ASS'Y	B2 PLUG	1
12	EH5281PCSS3W	POWER CORD ASS'Y	S3 PLUG HONG KONG	1
-	EH5281S01PW	INDIVIDUAL PACKAGE	PINK	1

-	EH5281S01VW	INDIVIDUAL PACKAGE	VIOLET	1
-	EH528113503W	INSTRUCTION BOOKLET	FOR TAIWAN	1
-	EH528168503W	INSTRUCTION BOOKLET	FOR OTHERS	1

[TOP](#) [PREVIOUS](#)