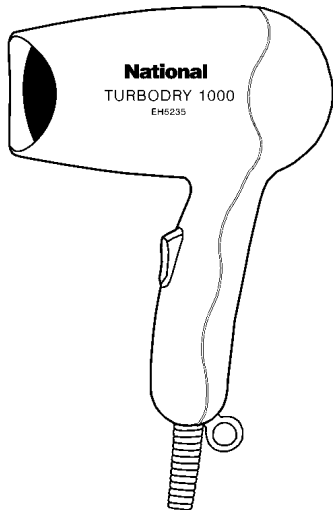


# Service Manual

Hair Dryer

**EH5235-A3**



## SPECIFICATIONS

Power source	AC110V, 220-240V / 50-60Hz (Separately available)	Air volume	0.8 m <sup>3</sup> /min (II)
		Air flow temperature	110V...105°C (II) 220 - 240V...105°C (II) (in case of room temperature 30°C)
Power consumption	II..... 110V,230V 1000W 220V 930W 240V 1100W I..... 110V 500W 220V 450W 230V 500W 240V 550W	Cord length	1.75 m
		Weight	390 g

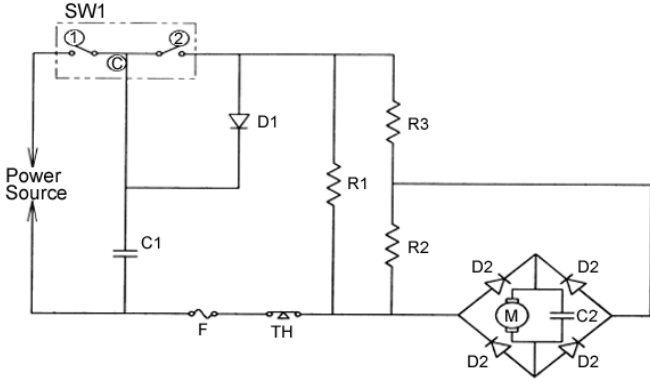
### **WARNING**

This service information is designed for experienced repair technicians only and is not designed for use by the general public. It does not contain warnings or cautions to advise non-technical individuals of potential dangers in attempting to service a product. Products powered by electricity should be serviced or repaired only by experienced professional technicians. Any attempt to service or repair the product or products dealt with in this service information by anyone else could result in serious injury or death.

## CONTENTS

	Page		Page
1 SCHEMATIC DIAGRAM .....	2	4 DISASSEMBLY INSTRUCTIONS .....	6
2 WIRING CONNECTION DIAGRAM .....	2	5 TROUBLESHOOTING GUIDE .....	7
3 ASSEMBLY INSTRUCTIONS .....	4	6 EXPLODED VIEW & REPLACEMENT PARTS LIST .....	8

# 1 SCHEMATIC DIAGRAM

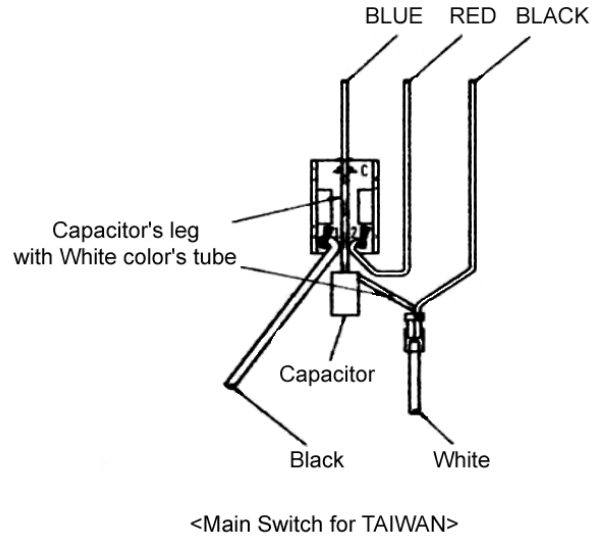
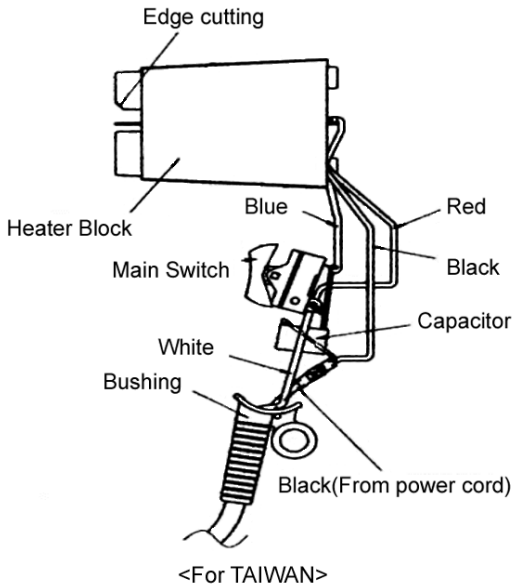


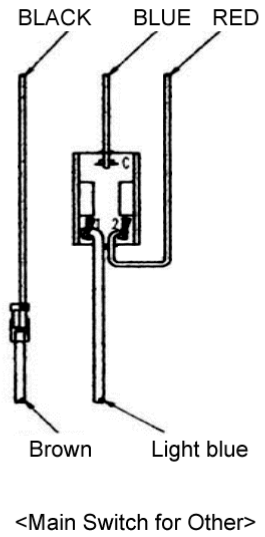
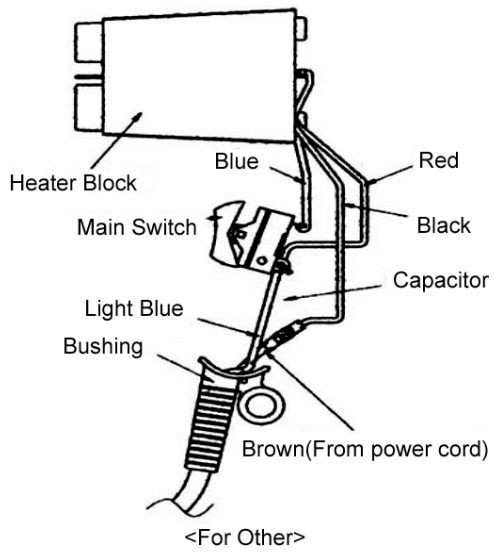
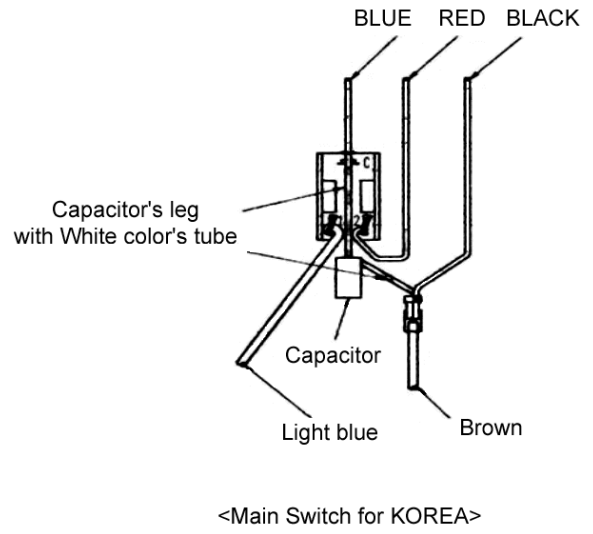
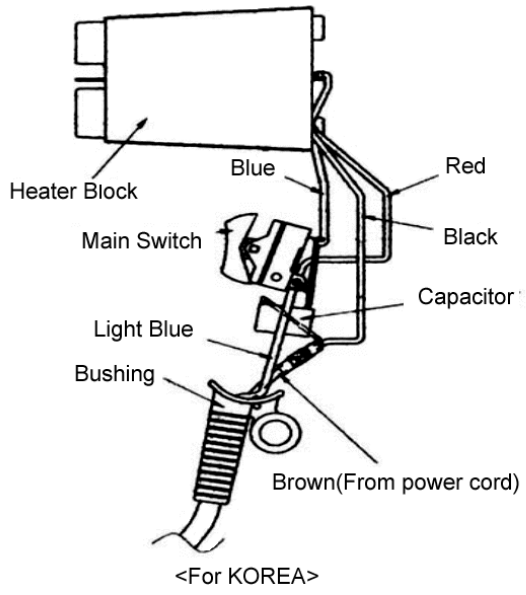
SW1 Main switch(ARG-1213-01-003)

	C-1	C-2
0	OFF	OFF
I	ON	OFF
II	ON	ON

		110V(TAIWAN)	220V(KOREA)	220-240V
C1	CAPACITOR	0.1 $\mu$ F, 275V		NOT USE
C2	CAPACITOR (FOR MOTOR)	0.1 $\mu$ F, 50VDC		
D1	DIODE	5A, 600V		
D2 $\times$ 4	DIODE (BRIDGE)	2A, 400V		
F	TEMPERATURE FUSE	192°C, 10A, 250V		
M	MOTOR	15VDC, 1.37A		
SW1	MAIN SWITCH	AC 125V,13A / 250V,6.5A		
R1// (R2+R3)	HEATER COIL	12.3 $\pm$ 0.5 $\Omega$	-	
(R2)		4.5 $\pm$ 0.2 $\Omega$	5.2 $\pm$ 0.2 $\Omega$	
R2+R3		-	53.5 $\pm$ 1.5 $\Omega$	
R1		-	NOT USE	
TH	THERMO SWITCH	125V,15A / 250V,8A 120°C		

# 2 WIRING CONNECTION DIAGRAM





### 3 ASSEMBLY INSTRUCTIONS

**CAUTION :** When soldering lead wires on switch, location and orientation of lead wires must be as shown in Figure 1.

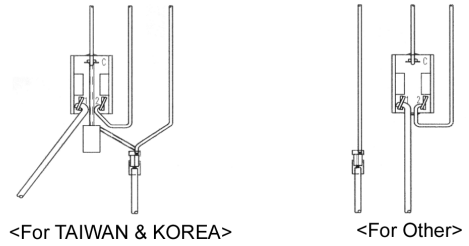


Figure 1

(1) Solder yellow and white lead wires into the heater as shown in Figure 2.

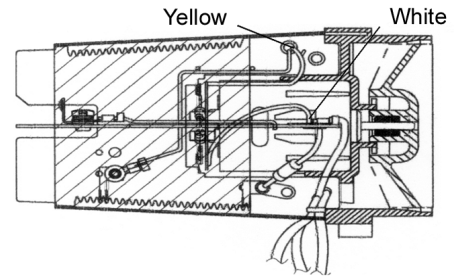


Figure 2

(2) Assemble the heater into slots of the motor block as shown in Figure 3.



Figure 3

(3) Insert the red, black and blue lead wires between the guide post of the air flow assembly as shown in Figure 4.  
 (4) Insert the motor block into slot of back housing as shown in Figure 4.

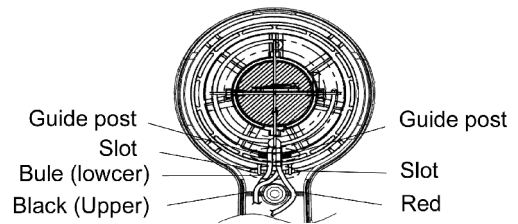


Figure 4

(5) Install the switch at the position as shown in Figure 5.  
 (6) Position all lead wires as shown in Figure 5.  
 (7) Set the power cord, bushing and fasten 2 screws at the power cord retainer as shown in Figure 5.

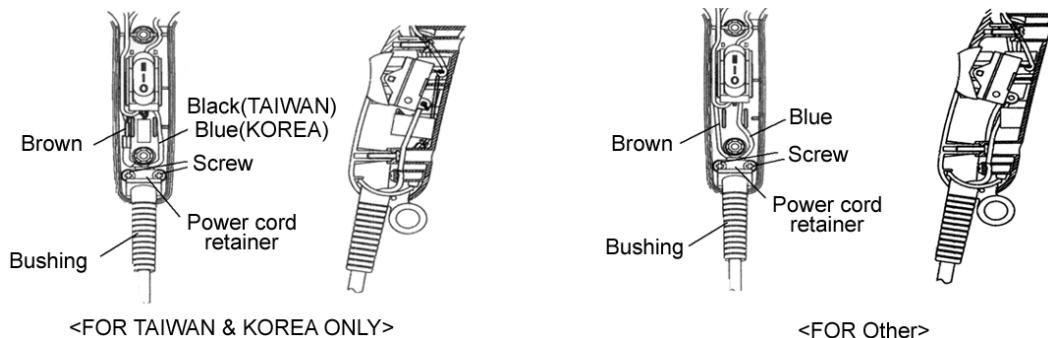


Figure 5

- (8) Set the air outlet grill and the outlet ring to the heater block by align ribs of the air outlet ring with slot of front housing as shown in Figure 6.

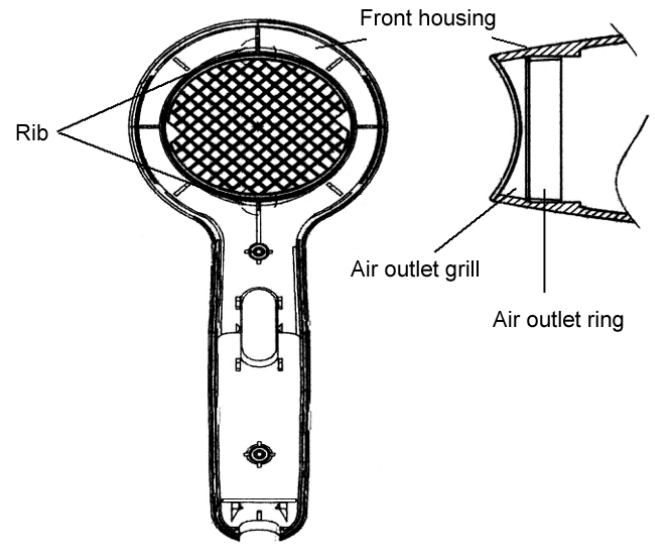


Figure 6

- (9) Assemble the air inlet grill into back housing with aligning mark of air inlet grill and mark of back housing as shown in Figure 7.

- (10) Assemble the housing with 2 torque screws at main body as shown in Figure 7.

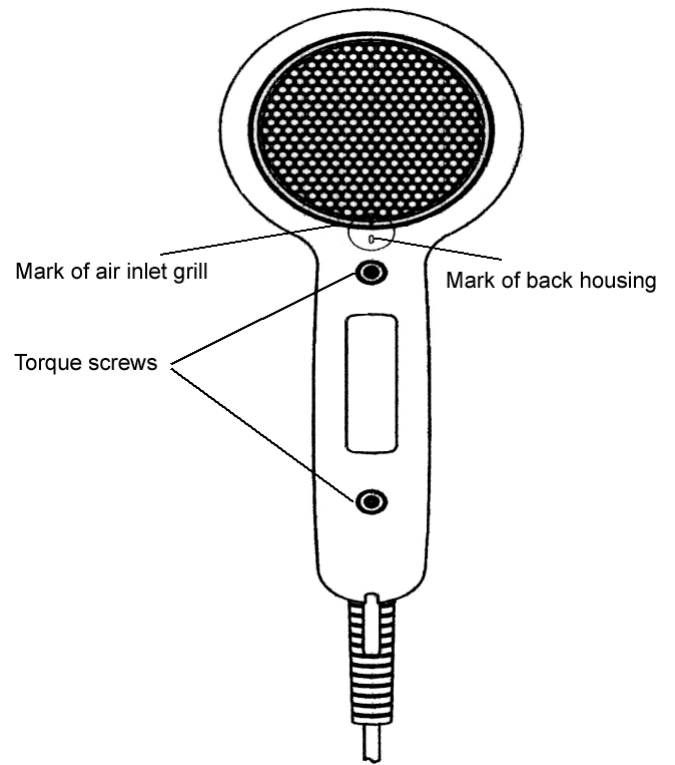


Figure 7

## 4 DISASSEMBLY INSTRUCTIONS

- (1) Remove 2 torque screws from the main body with a torque head driver as shown in Figure 8.

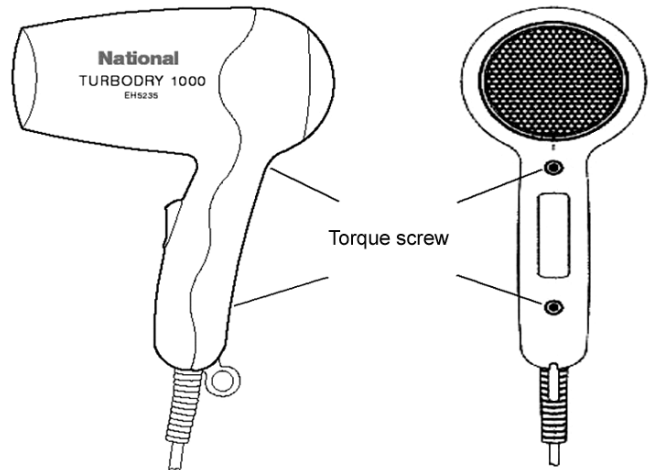


Figure 8

- (2) Remove hooks of front housing from back housing by rotating front housing clockwise direction as shown in Figure 9.

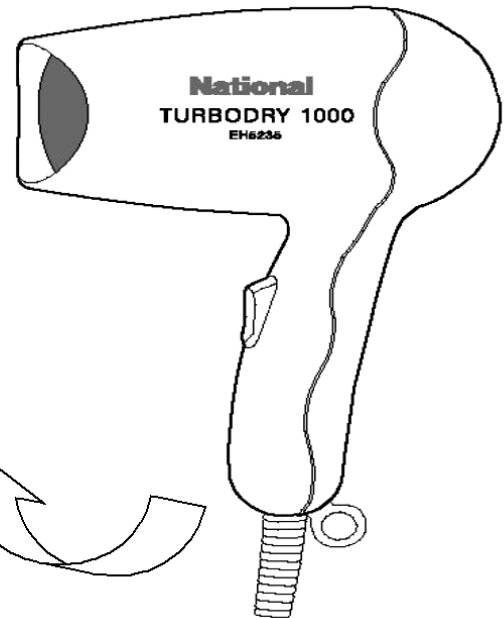


Figure 9

- (3) Remove 2 tapping screws from the power cord retainer.

- (4) Remove the motor block , heater block and main switch.

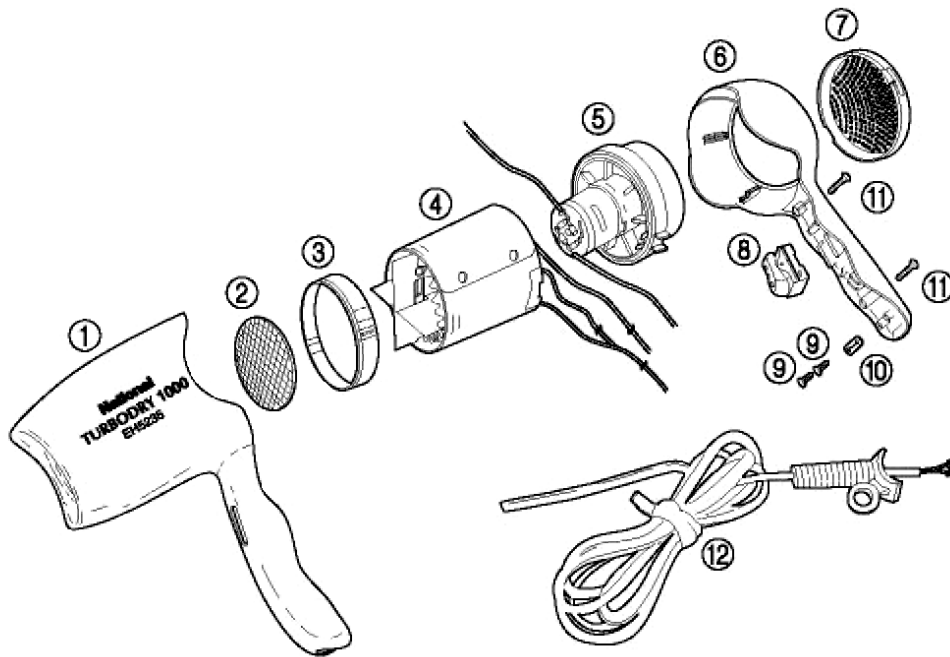
## 5 TROUBLESHOOTING GUIDE

NOTE: Refer to WIRING CONNECTION DIAGRAM.

<TROUBLE>	<CHECK>	<REMEDY>
Hot air is not emitted at "I" or "II" position.	→ Check continuity of the power cord.	→ Replace the power cord.
	↓ OK	NO
	Check continuity between (C) and (1) at "I" position of the main switch. Check continuity between (C) and (1), between (C) and (2) at "II" position of the main switch. (probe "+" of tester at (C), "-" of tester at (2) only)	→ Replace the main switch.
	↓ OK	NO
	Check the resistance of the heater coil between red lead wire and black lead wire of the heater block. The value should be as follows: 220~240V :approx. 53.5 Ω 110V :approx. 12.3 Ω	→ Replace the heater block.
	↓ OK	NO
	Check the motor rotates when adding DC15V to the motor terminal.	→ Replace the motor.
		NO

## 6 EXPLODED VIEW & REPLACEMENT PARTS LIST

### 6.1. EXPLODED VIEW



### 6.2. REPLACEMENT PARTS LIST

Note : All parts are supplied from MEW-Thailand through PLGA.

Remarks : \*1= Available individually

Ref. No.	Parts No.	Parts Name & Descriptions	Remarks	Per Unit
1	EH5235FHSL1W	FRONT HOUSING	Bule / TAIWAN (for 110V)	1
1	EH5235FHSL2W	FRONT HOUSING	Bule / OTHERS (220-240V)	1
1	EH5235FHSD1W	FRONT HOUSING	Orange / TAIWAN (for 110V)	1
1	EH5235FHSD2W	FRONT HOUSING	Orange / OTHERS (220-240V)	1
2	EH5235AOGW	AIR OUTLET GRILL		1
3	EH5235AORW	AIR OUTLET RING		1
4	EH5235HB11W	HEATER BLOCK ASS'Y	TAIWAN (110V)	1
4	EH5235HB22W	HEATER BLOCK ASS'Y	OTHERS (220-240V)	1
5	EH5235MBRW	MOTOR BLOCK		1
6	EH5235BHSL1W	BACK HOUSING	Bule / TAIWAN (for 110V)	1
6	EH5235BHSL2W	BACK HOUSING	Bule / OTHERS (220-240V)	1
6	EH5235BHSL7W	BACK HOUSING	Blue / KOREA	1
6	EH5235BHSL8W	BACK HOUSING	Blue / SINGAPORE, HONGKONG	1
6	EH5235BHSD1W	BACK HOUSING	TAIWAN (110V)	1
6	EH5235BHSD2W	BACK HOUSING	OTHERS (220V)	1
6	EH5235BHSD7W	BACK HOUSING	KOREA	1
6	EH5235BHSD8W	BACK HOUSING	SINGAPORE, HONGKONG	1
7	EH5235AIGLW	AIR INLET GRILL	Blue	1
7	EH5235AIGDW	AIR INLET GRILL	Orange	1
8	EH5235MSLW	MAIN SWITCH	Blue	1
8	EH5235MSDW	MAIN SWITCH	Orange	1
9	EH5235T3080W	TAPPING SCREW	*1	2
10	EH5235PCRW	POWER CORD RETAINER		1
11	EH5235T3012W	TAPPING SCREW	*1	2
12	EH5235PCA2W	POWER CORD ASS'Y	A2 Plug / TAIWAN	1
12	EH5235PCS3W	POWER CORD ASS'Y	S3 Plug / S'PORE, HONGKONG	1
12	EH5235PCC2W	POWER CORD ASS'Y	C2 Plug / OTHER	1
12	EH5235PCB2W	POWER CORD ASS'Y	B2 Plug / KOREA	1
-	EH5235S01LW	INDIVIDUAL PACKAGE	Blue	1
-	EH5235S01DW	INDIVIDUAL PACKAGE	Orange	1
-	EH5235S03W	INSTRUCTION BOOKLET		1
-	EH5235S05W	PROTECTION PAD		1