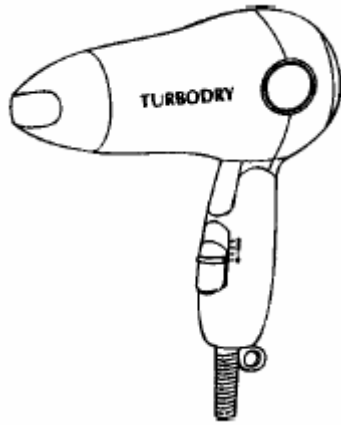


# Service Manual

**Hair Dryer**



## Model No.EH5214

**ASIA**

**MIDDLE EAST**

**⚠WARNING**

This service literature is designed for experienced repair technicians only and is not designed for use by the general public. It does not contain warnings or cautions to advise non-technical individuals of potential dangers in attempting to service a product. Products powered by electricity should be serviced or repaired only by experienced professional technicians. Any attempt to service or repair the product or products dealt with in this service information by anyone else could result in serious injury or death.

**IMPORTANT SAFETY NOTICE**

There are special components used in this equipment which are important for safety. These parts are marked by ⚠ in the Schematic Diagrams, Circuit Board Diagrams, Exploded views and Replacement Parts List. It is essential that these critical parts should be replaced with manufacture's specified parts to prevent shock, fire or other hazards. Do not modify the original design without permission of manufacturer.

### TABLE OF CONTENTS

	Page		Page
• Warning .....	2	• Wiring Diagrams .....	5
• Specifications .....	2	• Schematic Diagrams .....	5
• Troubleshooting Guide .....	3	• Exploded View & Replacement Parts List .....	6-7
• Assembly Instructions .....	4		

# Panasonic

©2004 Matsushita Electric Works (Thailand), Ltd.  
All rights reserved. Unauthorized copying and distribution is a violation of law.

**EH5214**

## 1. WARNING

### Caution:

- Pb free solder has a higher melting point than standard solder; Typically the melting point is 50 - 70° F (30 - 40°C) higher. Please use a soldering iron with temperature control and adjust it to 750 ±20° F (400 ± 10°C). In case of using high temperature soldering iron, please be careful not to heat too long.
- Pb free solder will tend to splash when heated too high (about 1100° F / 600°C).

## 2. SPECIFICATIONS

Power source	AC 110V, 220-240V / 50-60Hz		
Power consumption		Mode 3	Mode 1
	110V	1200W	30W
	220V	1100W	55W
	230V	1200W	60W
	240V	1300W	65W
Air flow velocity	14.0m/s (Mode 2)		
Air Volume	1.1m <sup>3</sup> /min (Mode 2)		
Air flow temperature	110V	110°C (Mode 2), room temperature 30°C	
	220V-240V	110°C (Mode 2), room temperature 30°C	
Cord length	110V	2.0m	
	220V-240V	1.7m	
Weight	380g (with nozzle)		

### 3. TROUBLESHOOTING GUIDE (Refer to WIRING CONNECTION DIAGRAM)

<TROUBLE>	<CHECK>	<REMEDY>
Hot or Cool air is not emitted at "1" "2" and "3" mode.	→ Check the conductivity of power cord.	NO → Replace the power cord.
↓ OK		
	Check the conductivity between (1) and (4) of main switch at "1" mode. Check the conductivity between (1) and (4), between (2) and (4) of main switch at "2" mode. Check the conductivity between (1) and (4), between (2) and (4), between (3) and (5) of main switch at "3" mode. (probe "+" of tester at "3", "-" of tester at "5" only)	NO → Replace the main switch.
↓ OK		
	Check the micro switch. Check the resistance value of heater coil between (2) and (5) of main switch at "0" or "1" mode. The value should be as the following. 220-240V : approx. 48.3 Ω 110V : approx. 10.4 Ω Check the resistance value of voltage dropping resistor between white lead wire in heater block and (5) of main switch at "0" or "1" mode. The value should be as the following. 220-240V : approx. 375 Ω 110v : approx. 154 Ω	NO → Replace the heater block.
↓ OK		
	Check if the motor rotates when adding DC5V to motor terminal.	NO → Replace the motor.
↓ OK		
	Check the conductivity of diode(D).	NO → Replace the heater block.

## 4 ASSEMBLY INSTRUCTIONS

1. Assemble the air outlet grill and the air outlet ring into the housing B as the following Fig.1.
2. Attach the air flow with the heater, and insert into the housing B as the following Fig.1.

**NOTE :**

Orange, blue, yellow, and brown lead wires insert into the rib as the following Fig.1.

White and yellow lead wires must insert to the groove of heater base board.

3. Assemble the housing B into the housing A and insert the swivel ring as the following Fig.2.

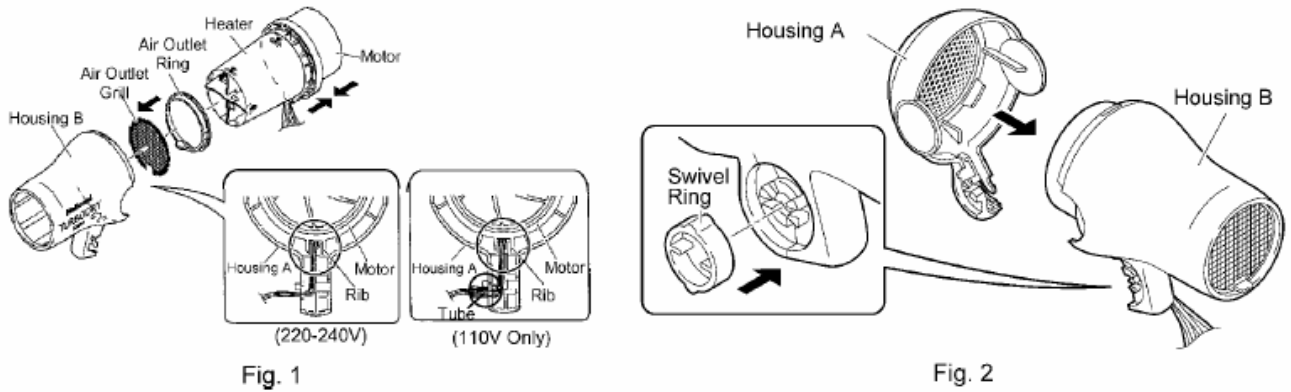


Fig. 1

Fig. 2

4. Assemble the handle B into the housing AB as the following Fig.3.
5. Insert the main switch plate, the main switch and the power cord into the handle B as the following Fig.3.
6. Insert the cord bushing into the handle B as the following Fig.3.
7. Assemble the handle A into the handle B as the following Fig.4.
8. Fasten 2 screws for handle as the following Fig.4.

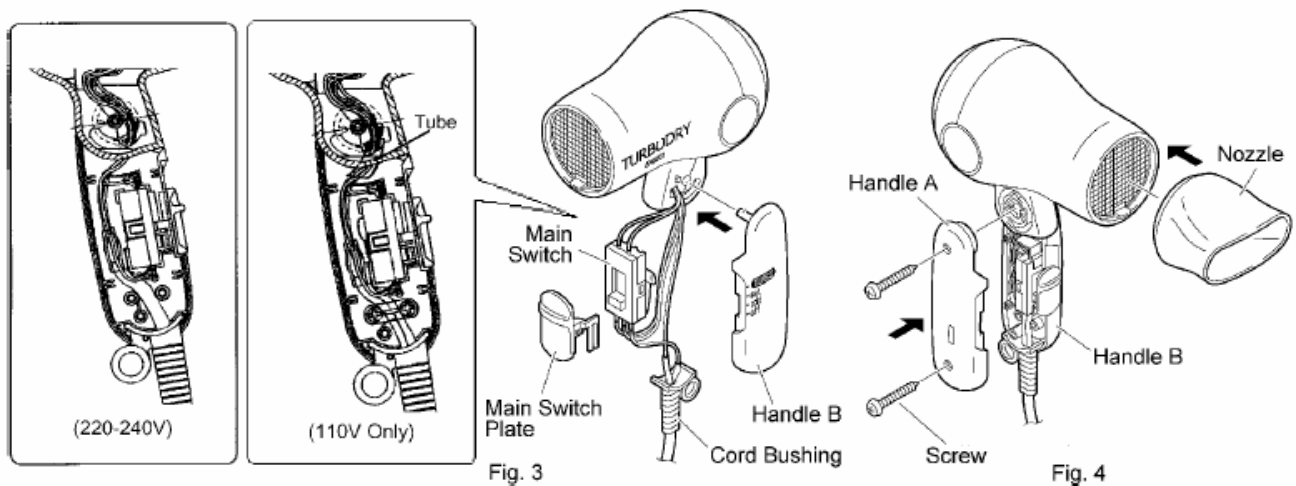
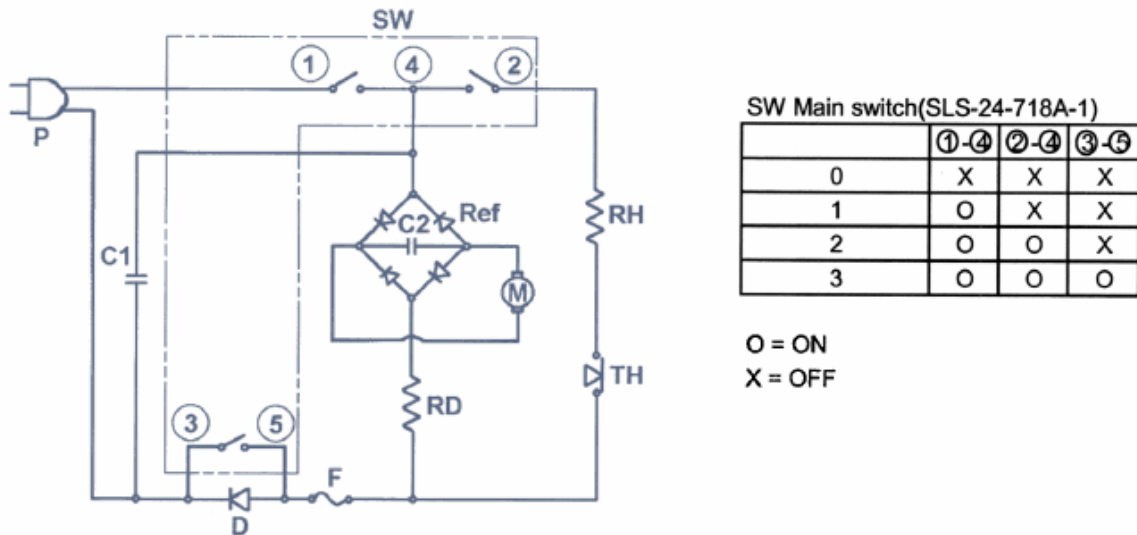


Fig. 3

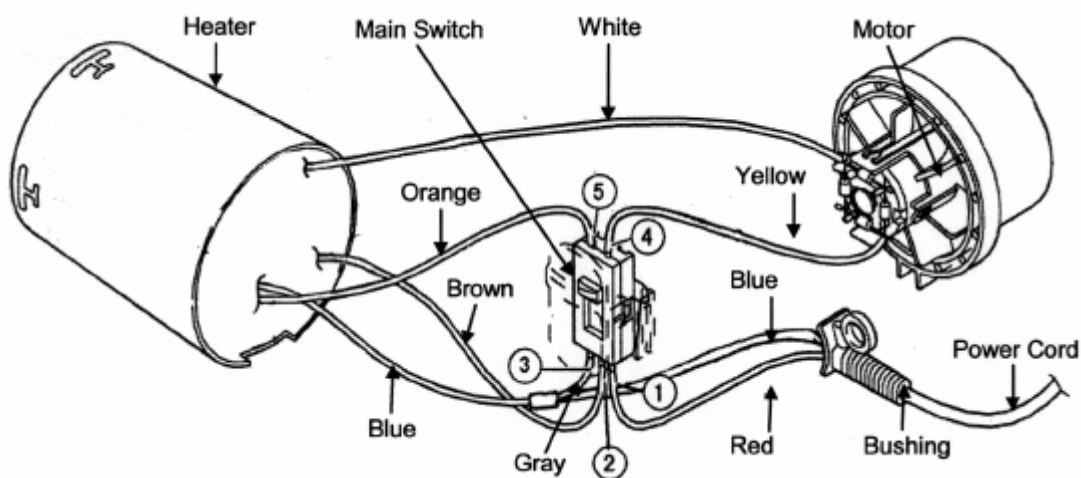
Fig. 4

## 5. SCHEMATIC DIAGRAM



		110V TAIWAN	220V KOREA	220-240V
C1	CAPACITOR	0.1 $\mu$ F, 125V	0.22 $\mu$ F, 250V	-
C2	CAPACITOR	0.1 $\mu$ F, 50V		
D	DIODE	6A, 1000V	5A, 400V	
F	TEMPERATURE FUSE	142°C, 12A, 125V	132°C, 10A, 250V OR 131°C, 15A, 250V	
M	MOTOR	3.6V, 350mA		
SW	MAIN SWITCH	AC 125V 13A/250V 6.5A		
RD	VOLTAGE DROPPING RESISTOR	154 $\pm$ 6 $\Omega$	375 $\pm$ 10 $\Omega$	
RH	HEATER COIL	10.4 $\pm$ 0.5 $\Omega$	48.3 $\pm$ 2 $\Omega$	
TH	THERMO SWITCH	250V, 6A 120°C		
Ref.	BRIDGE RECTIFIER	100V, 1A $\times$ 4		

## 6. WIRING CONNECTION DIAGRAM





## 7.2 REPLACEMENT PARTS LIST

	Ref. No.	Part No.	Part Name & Description	Quantity	Remarks
	1	EH5214HSLW	HOUSING AB ASS'Y	1	BLUE
	1	EH5214HSPW	HOUSING AS ASS'Y	1	PINK
	2	EH5214AOW	AIR OUTLET GRILL	1	
	3	EH5214AORHW	AIR OUTLET RING	1	GRAY
	4	EH5214HDL1W	HANDLE AB ASS'Y	1	BLUE (TAIWAN)
	4	EH5214HDL2W	HANDLE AB ASS'Y	1	BLUE
	4	EH5214HDL3W	HANDLE AB ASS'Y	1	BLUE (S'PORE, HK)
	4	EH5214HDL7W	HANDLE AB ASS'Y	1	BLUE (KOREA)
	4	EH5214HDP1W	HANDLE AB ASS'Y	1	PINK (TAIWAN)
	4	EH5214HDP2W	HANDLE AB ASS'Y	1	PINK
	4	EH5214HDP3W	HANDLE AB ASS'Y	1	PINK (S'PORE, HK)
	4	EH5214HDP7W	HANDLE AB ASS'Y	1	PINK (KOREA)
	5	EH5214SRW	SWIVEL RING	1	NATURAL
	6	EH5214T0312W	TAPPING SCREW	2	*1
	7	EH5214MSLW	MAIN SWITCH PLATE	1	BLUE
	7	EH5214MSPW	MAIN SWITCH PLATE	2	PINK
	8	EH5214SS135W	MAIN SWITCH	1	(TAIWAN)
	8	EH5214SSW	MAIN SWITCH	1	
	8	EH5214SS675W	MAIN SWITCH	1	(KOREA)
	9	EH5214HB11W	HEATER B/K ASS'Y	1	110V (TAIWAN)
	9	EH5214HB22W	HEATER B/K ASS'Y	1	220-240V
	10	EH5214MM11W	MOTOR BLOCK ASS'Y	1	110V (TAIWAN)
	10	EH5214MM22W	MOTOR BLOCK ASS'Y	1	220-240V
	11	EH5214PCA2W	POWER CORD	1	(TAIWAN, A2 PLUG)
	11	EH5214PCHC2W	POWER CORD	1	(C2 PLUG)
	11	EH5214PCHA2W	POWER CORD	1	(PHILIPPINES, A2 PLUG)
	11	EH5214PCS3W	POWER CORD	1	(S'PORE, HK, S3 PLUG)
	11	EH5214PCHB2W	POWER CORD	1	(KOREA, B2 PLUG)
	12	EH5214NZLW	NOZZLE	1	L/BLUE
	12	EH5214NZPW	NOZZLE	1	PINK
	13	EH5214PCRW	POWER CORD RETAINER	1	BLACK (TAIWAN ONLY)
	14	EH5214T3010W	TAPPING SCREW	2	*1 (TAIWAN ONLY)
	15	EH5214ITW	INSULATION TUBE	1	WHITE (TAIWAN ONLY)
	-	EH5214S03W	INSTRUCTION BOOKLET	1	
	-	EH5214S01LW	INDIVIDUAL FOR PACKAGE	1	BLUE
	-	EH5214S01PW	INDIVIDUAL FOR PACKAGE	1	PINK
	-	EH5214S09W	FILLER FOR PACKAGE	1	

RMKS : \* 1 Individual Available

All parts are supplied from PEW-Thailand through PLGA