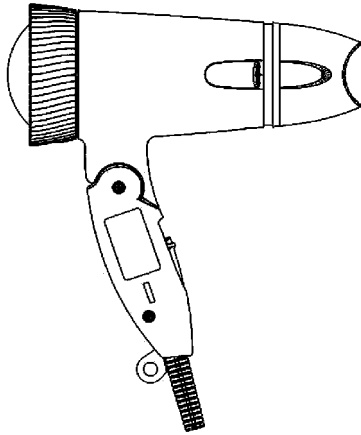


Service Manual

Hair Dryer

Model No. **EH-NE42**

ASIA



⚠ WARNING

This service information is designed for experienced repair technicians only and is not designed for use by the general public. It does not contain warnings or cautions to advise non-technical individuals of potential dangers in attempting to service a product. Products powered by electricity should be serviced or repaired only by experienced professional technicians. Any attempt to service or repair the product or products dealt with in this service information by anyone else could result in serious injury or death.

IMPORTANT SAFETY NOTICE

There are special components used in this equipment which are important for safety. These parts are marked by ⚠ in the Schematic Diagrams, Circuit Board Diagrams, Exploded Views and Replacement Parts List. It is essential that these critical parts should be replaced with manufacturer's specified parts to prevent shock, fire or other hazards. Do not modify the original design without permission of manufacturer.

TABLE OF CONTENTS

	PAGE	PAGE
1 Warning-----	2	
2 Specifications -----	2	
3 Troubleshooting Guide-----	3	
4 Disassembly and Assembly Instructions -----	4	
5 Wiring Connection Diagram -----	11	
6 Schematic Diagram-----	12	
7 Exploded View and Replacement Parts List -----	13	

1 Warning

Caution:

- Pb free solder has a higher melting point than standard solder; Typical the melting point is 50 - 70°F (30 - 40°C) higher. Please use a soldering iron with temperature control and adjust it to 750 ± 20°F (400 ± 10°C). In case of using high temperature soldering iron, please be careful not to heat too long.
- Pb free solder will tend to splash when heated too high (about 1100°F / 600°C).

2 Specifications

Power source	AC220-240V	50-60	Hz
Power consumption	240V	1500	W
	230V	1400	W
	220V	1300	W
Air volume with attachmant		1.30	m ³ /min
Air flow temperature (Mode 3) (in case of room temperature 30°C)		120	°C
Cord length	S3,B2 Plug	1.875	m
	B2 Plug (615,645)	1.820	m
Weight (without power cord and nozzle)		340	g

3 Troubleshooting Guide

Refer to WIRING CONNECTION DIAGRAM.

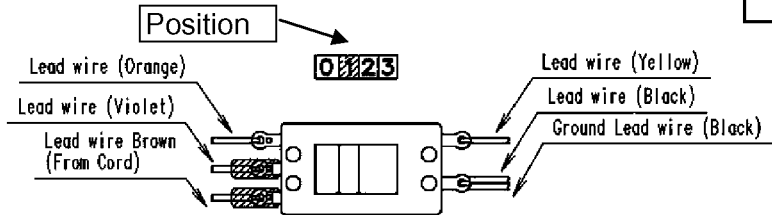
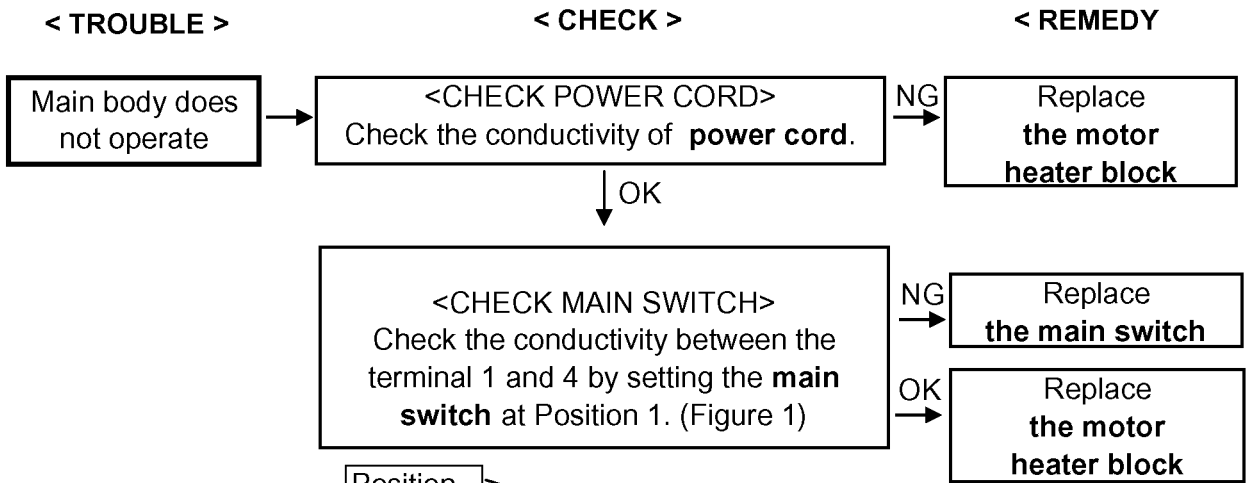


Figure 1

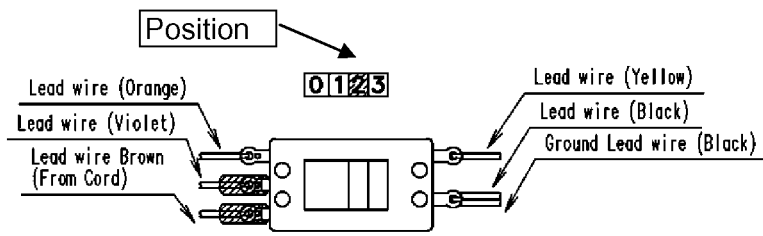
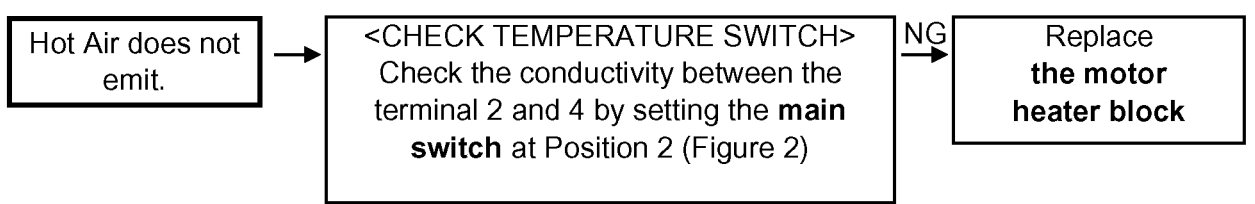


Figure 2

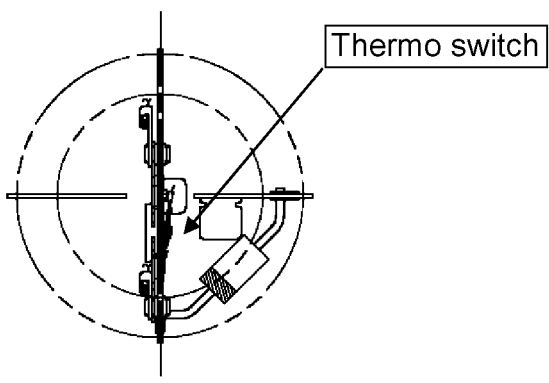
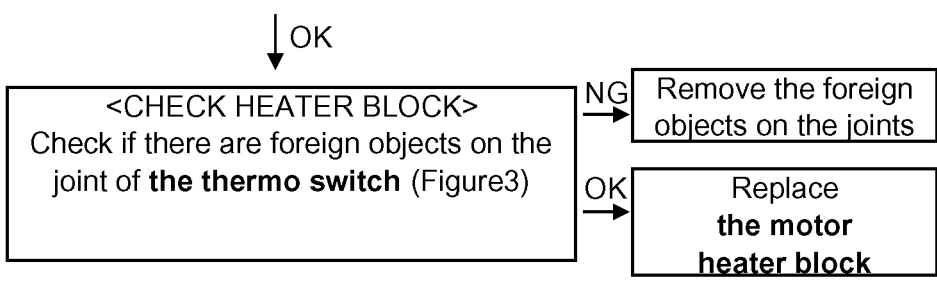


Figure 3

4 Disassembly and Assembly Instructions

4.1. Disassembly instruction

1. Take off nozzle as same direction in figure 4.

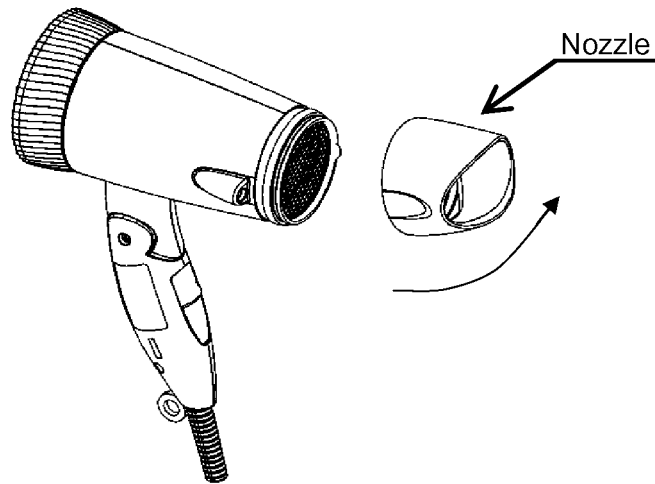


Figure 4

2. Remove 2 tapping screws by Plus Driver and 2 torx screws by IEC driver as figure 5.

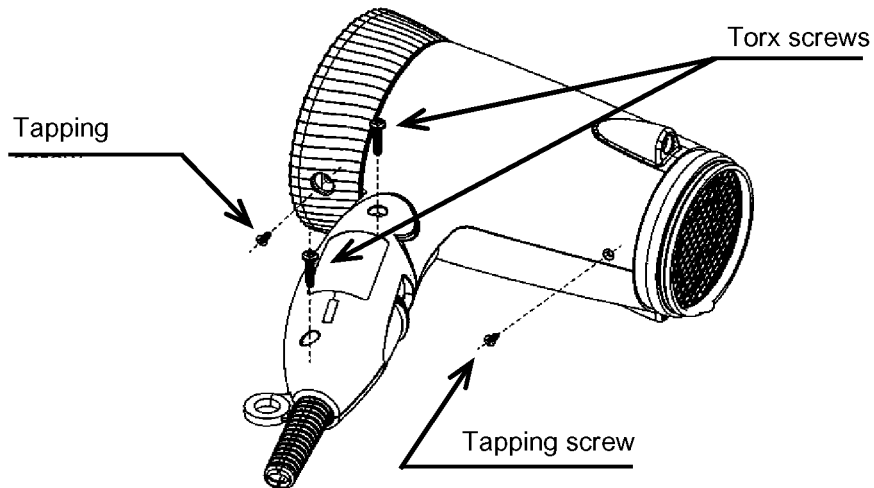


Figure 5

3. Take off an air outlet grill and an air outlet ring by rotating.
Take off an air inlet ring by rotating, then pulling a rear cover as figure 6.

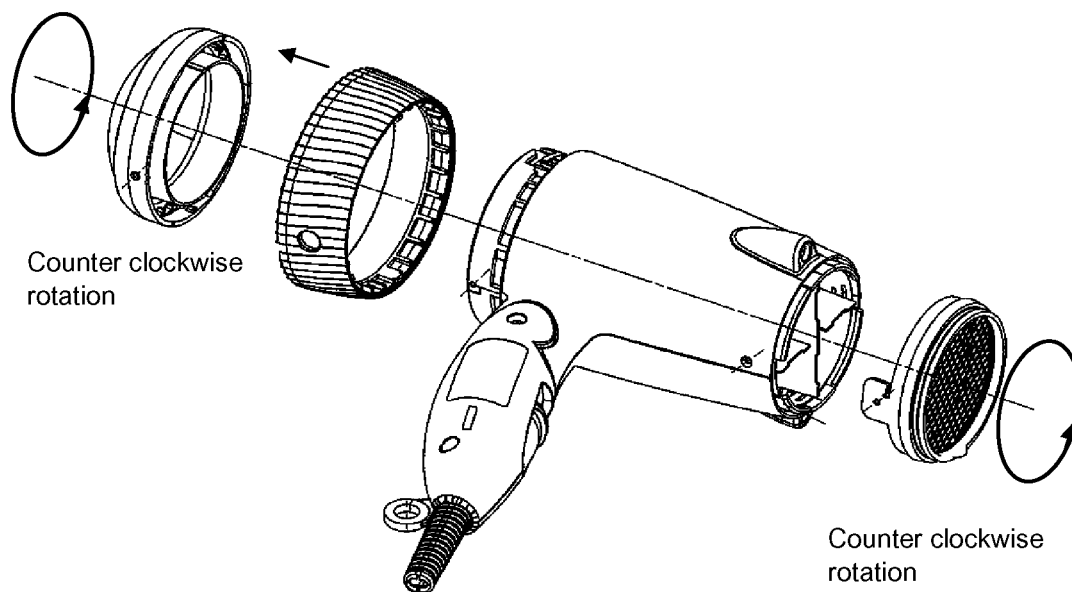


Figure 6

4. Take off a handle A from housing A and B as figure 7.

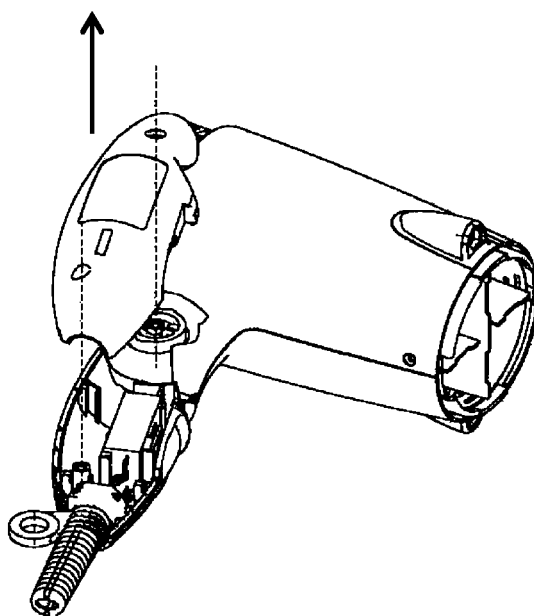


Figure 7

5. Take off a housing A from a housing B as figure 8.

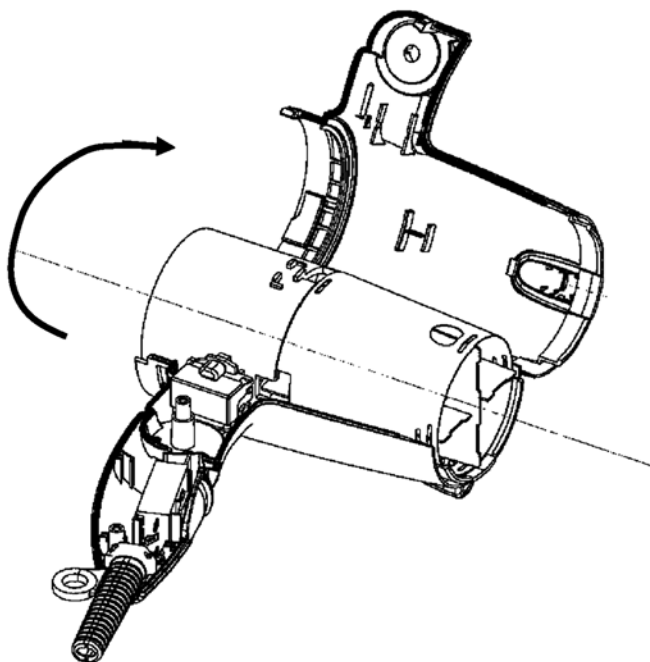


Figure 8

6. Take off a motor heater block from a housing B as figure 9.

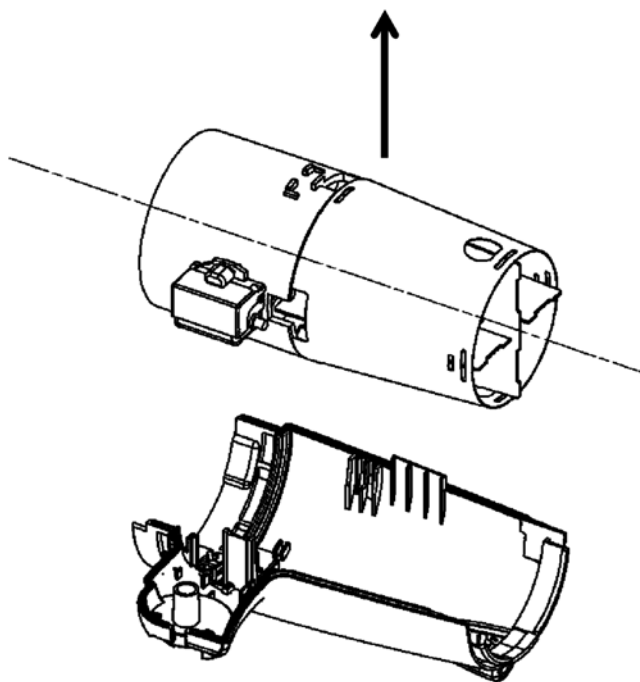


Figure 9

4.2. Assembly instruction

1. Install lead wire Black, Yellow, Violet, Orange, Ground lead wire and lead wire brown (from power cord) with a main switch and a capacitor as figure 10.

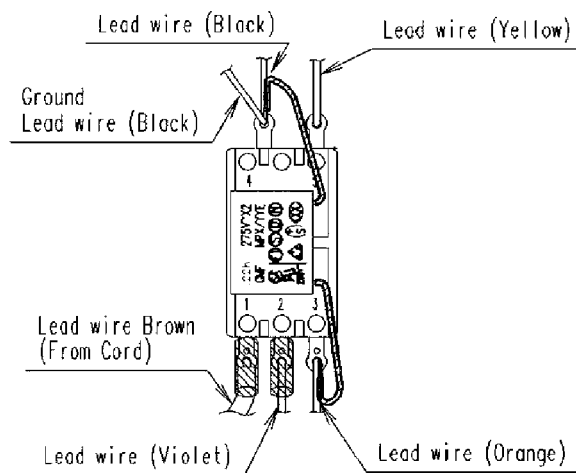


Figure 10

2. Connecting and soldering a motor heater block with a main switch as figure 11.

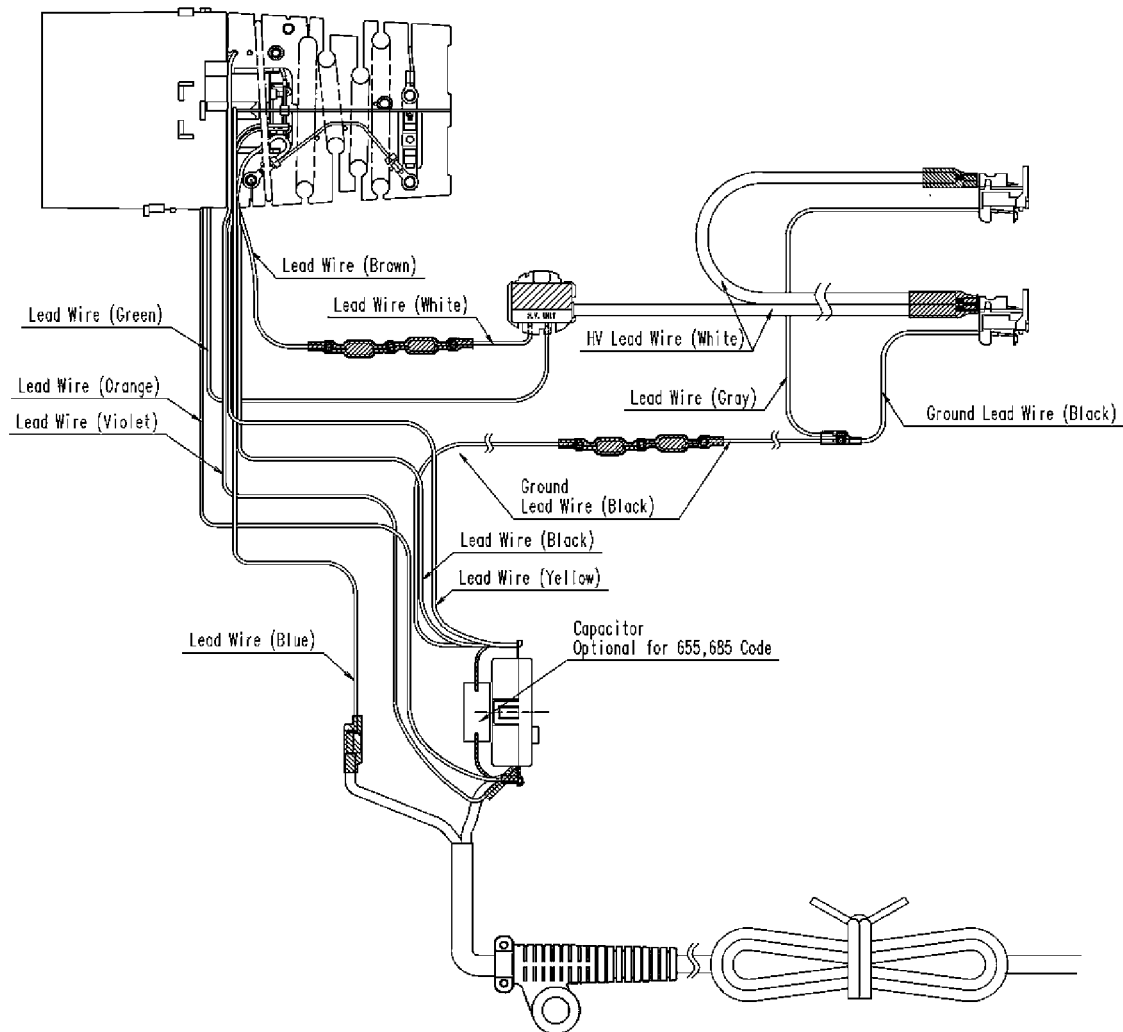


Figure 11

3. Assemble discharge covers with a motor heater block.
Then assemble them with housing A and B as figure 12, 13.

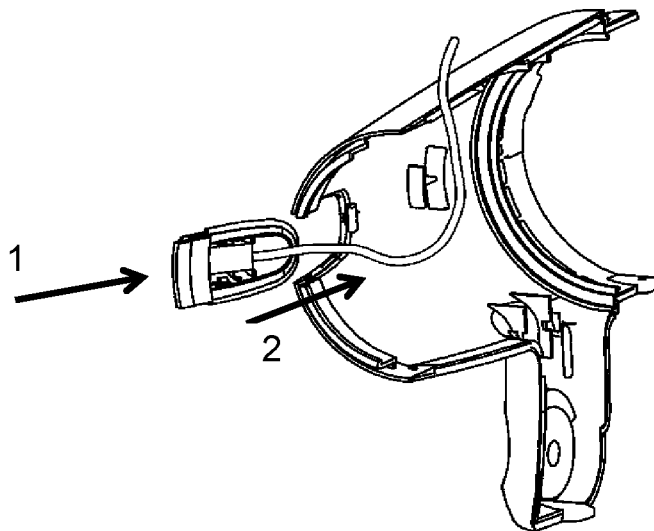


Figure 12

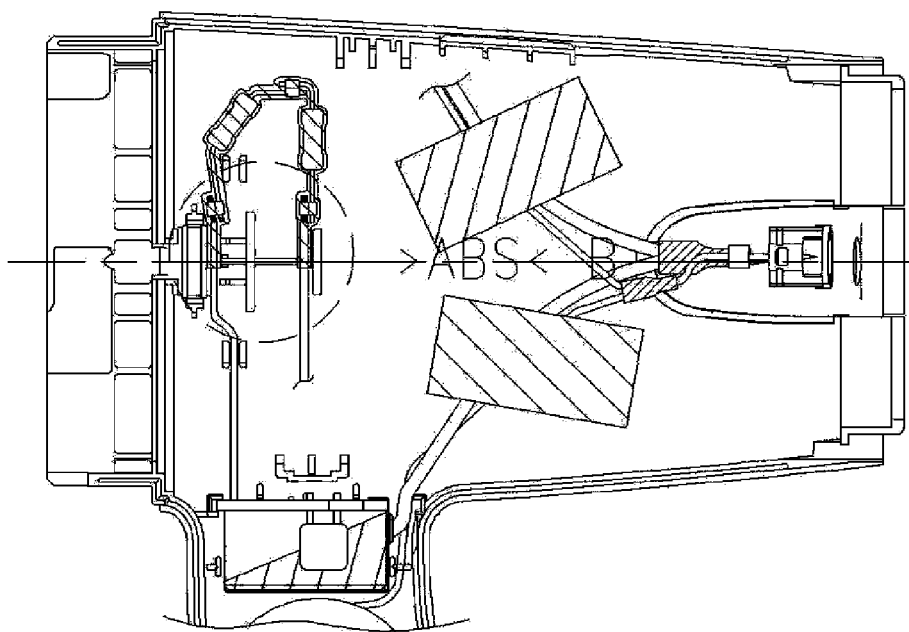


Figure 13

4. Assemble motor heater block with handle B and housing B as figure 14.

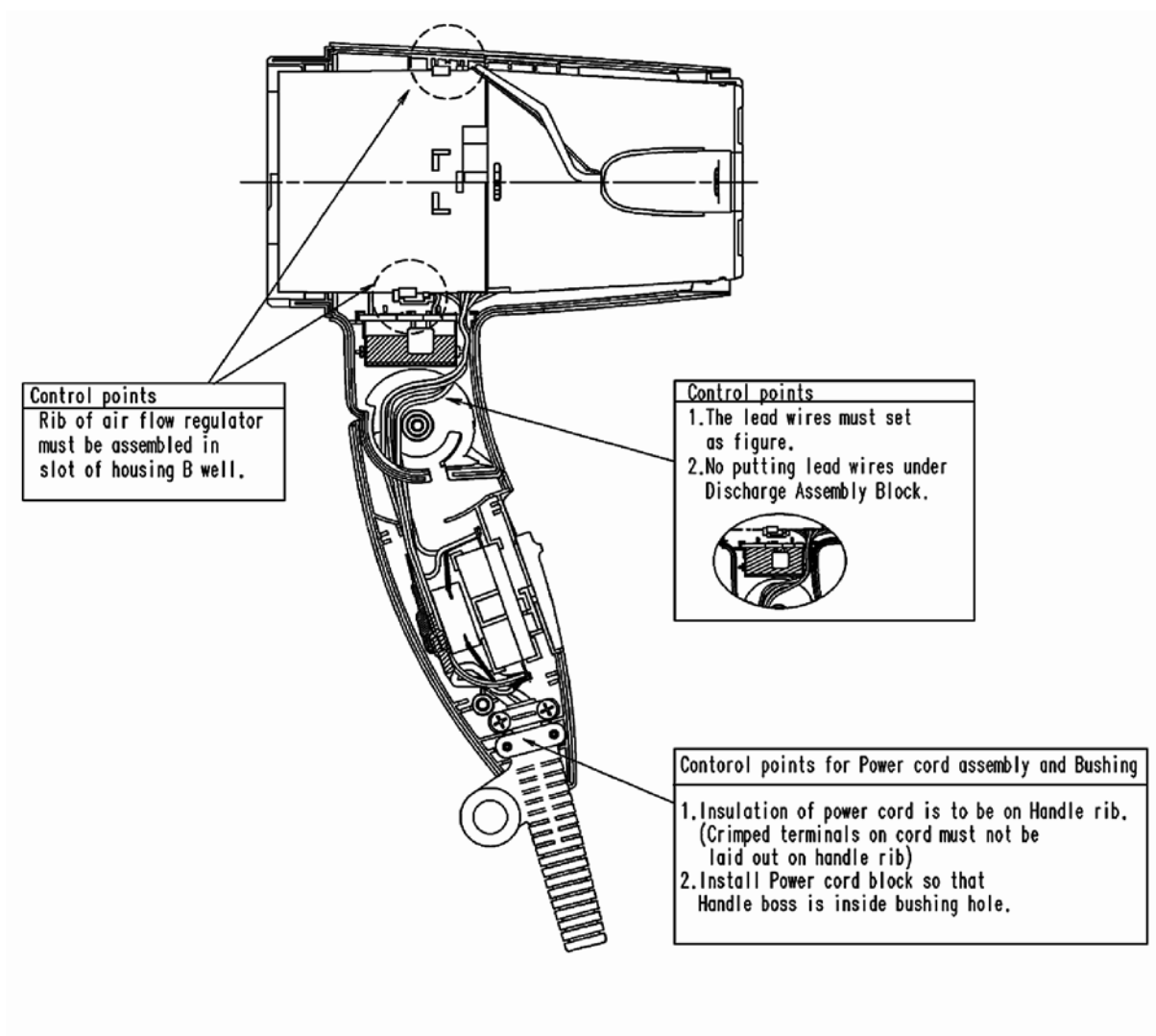


Figure 14

5. Assembly handle A , screws and nozzle as shown figure 15.

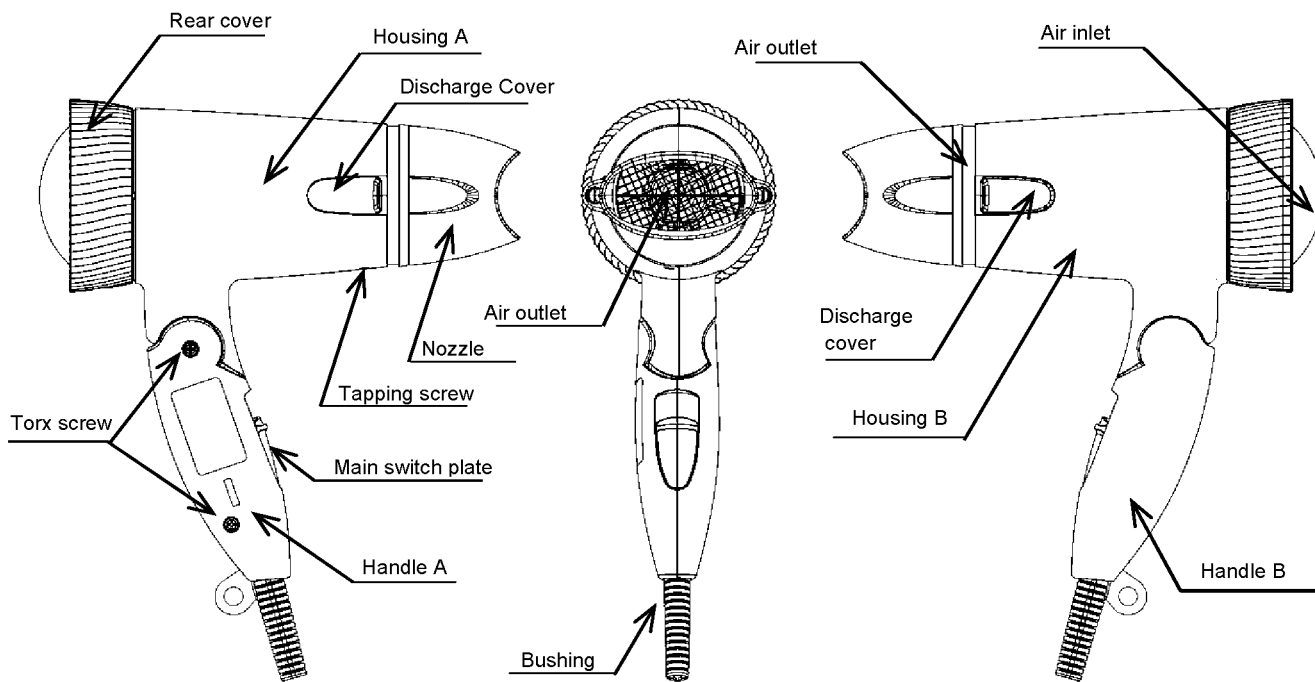


Figure 15

5 Wiring Connection Diagram

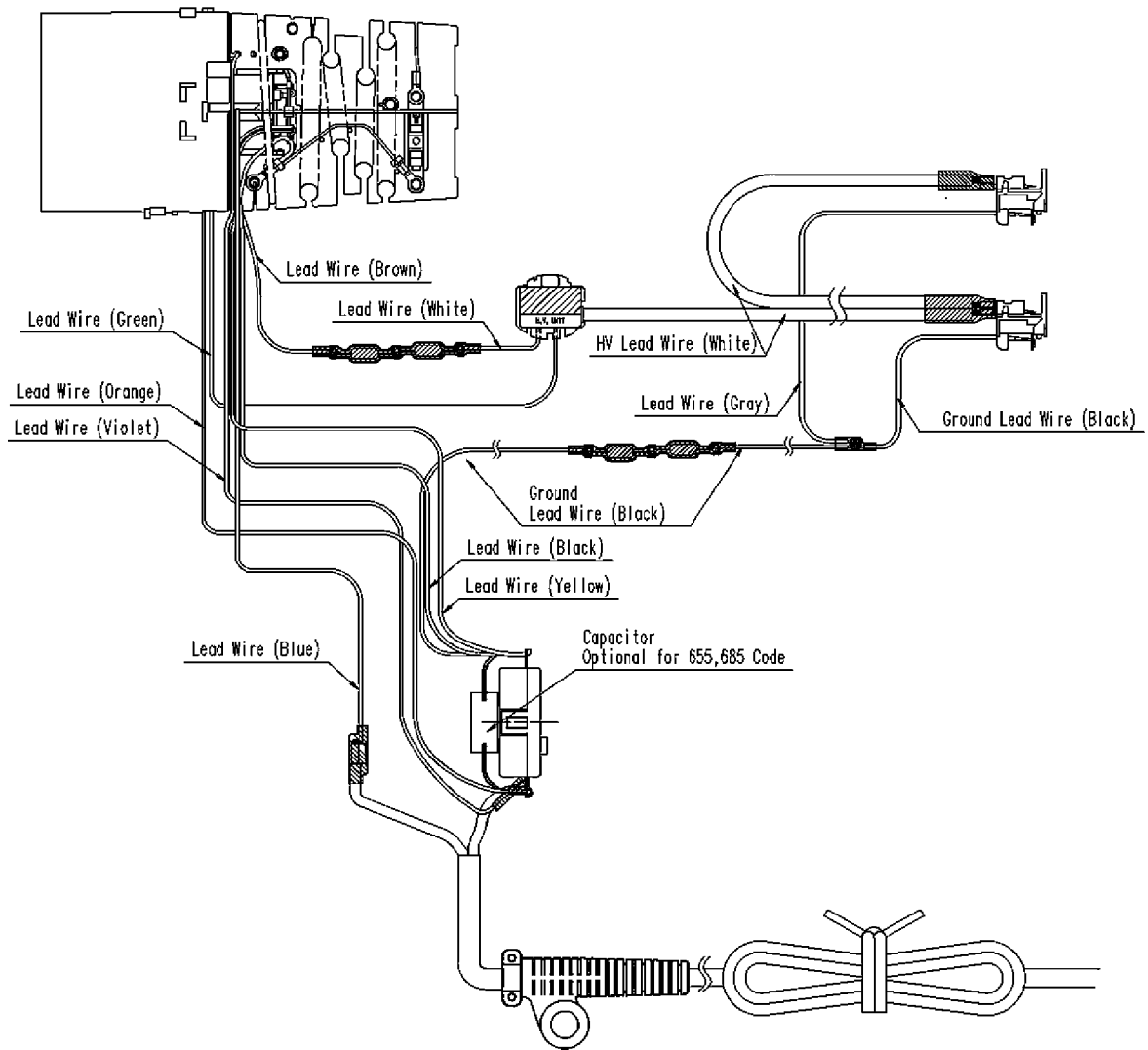


Figure 16

6 Schematic Diagram

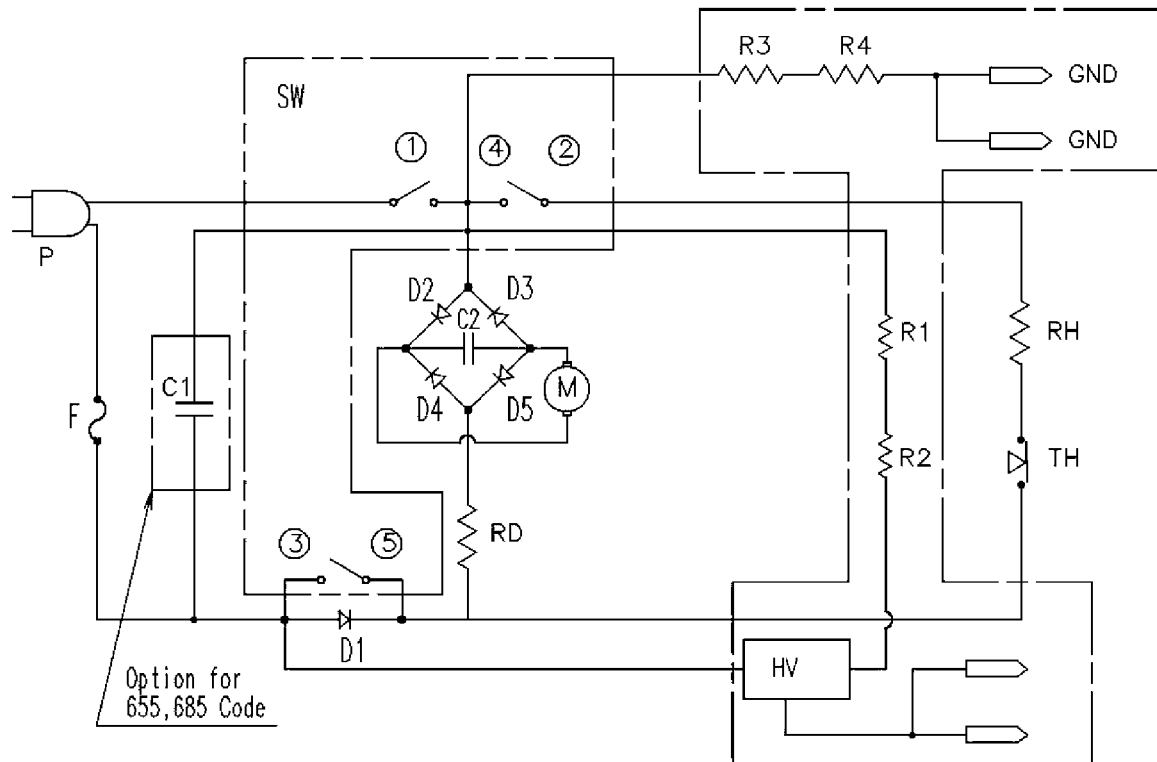


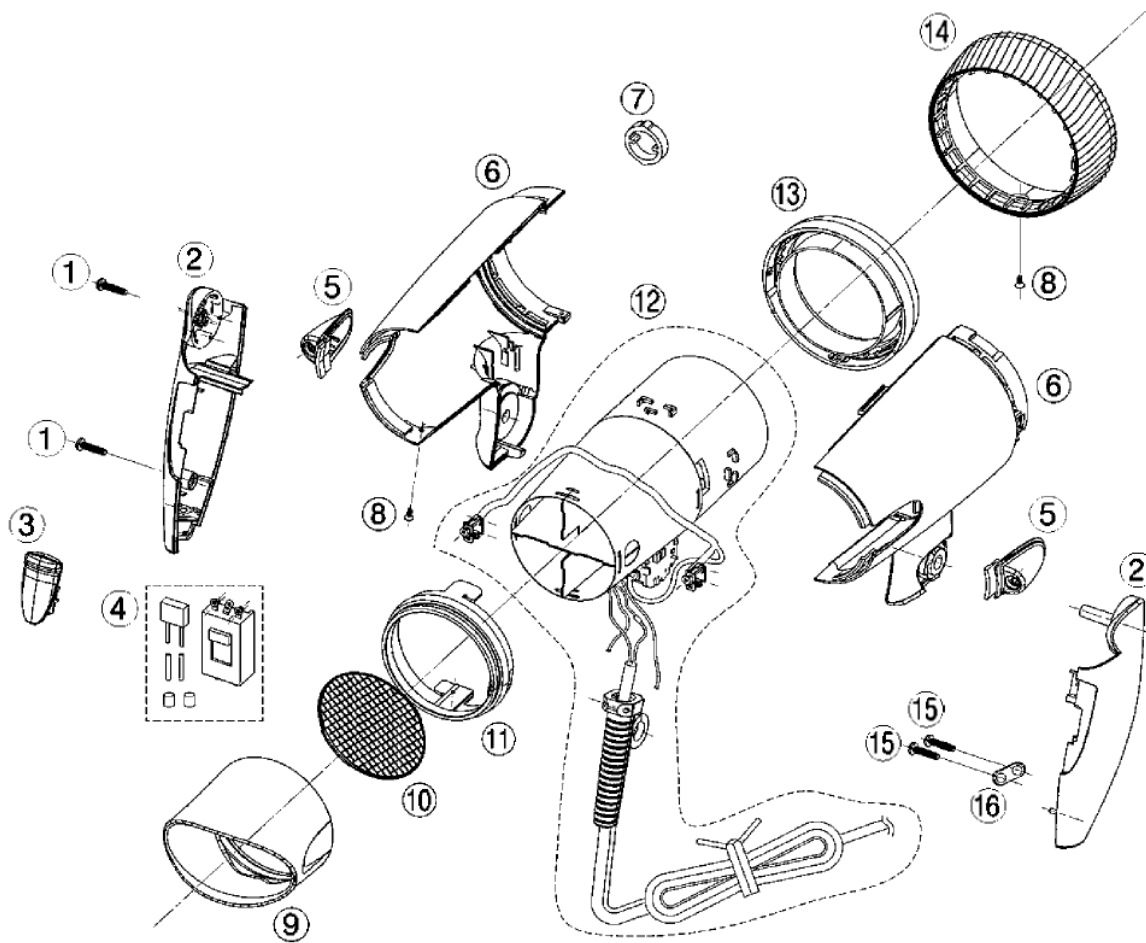
Figure 17

Mode	1~4	2~4	3~5
0	X	X	X
1	0	X	X
2	0	0	X
3	0	0	0

Component		Specifiactions	Specifiactions
Symbol	Description	EH-NE42 (220~240 V) Code 685,655	EH-NE42 (220~240 V) Code 615,645,L
C1	Capacitor (Noise suppresion)	0.22 μ F , 275 Vac	-
C2	Capacitor (Motor)	0.10 μ F , 100 Vdc	
RH	Heater coil	41.0 \pm 1.2 Ω	
RD	Voltage dropping resistor	360.0 \pm 10.0 Ω	
R1,R2	Fix resistor A	13 k Ω , 1 W	
R3,R4	Fix resistor B	1 M Ω , 1/2 W	
TH	Thermo switch	120 \pm 5 $^{\circ}$ c	
F	Temperature fuse	15 A , 250 V , 142 $^{\circ}$ c	
D1	Diode	1000 V , 7 A	
D2,D3,D4,D5	Rectifier diode	600 V , 1 A	
SW	Main switch	250 V , 7.5 A / 125 V , 13.5 A	
HV	High voltage PCB		
P	Power cord		
M	Motor	DC 24 V	

7 Exploded View and Replacement Parts List

Model No. : EH-NE42 Exploded View



Remarks : *1 Individual Available
All parts are supplied from PEW-Thailand through PLGA

Model No. : EH-NE42 Parts List

Safety	Ref. No.	Part No.	Part Name & Description	Q'ty	Remarks
	1	EHNE42T0312W	TORX SCREW 3*12	2	FOR HANDLE AB *1
	2	EHNE42HDHW	HANDLE AB	1	
	3	EHNE42MSPHW	MAIN SWITCH PLATE	1	
	4	EHNE42MSW	MAIN SWITCH	1	INCLUDE 2 INSULATION TUBES (FOR 615,645 CODE)
	4	EHNE42MS2W	MAIN SWITCH	1	INCLUDE CAPACITOR, 4 INSULATION TUBES (FOR 655,685 CODE)
	5	EHNE42DECSW	DISCHARGE ELECTRODE COVER	1	
	6	EHNE42HSNW	HOUSING AB	1	
	7	EHNE42SRTW	SWIVEL RING	1	
	8	EHNE42T2005W	TAPPING SCREW 2.0*5	2	FOR HOUSING AND REAR COVER *1
	9	EHNE42NZYW	NOZZLE	1	
	10	EHNE42AOGW	AIR OUTLET GRILL	1	
	11	EHNE42AORW	AIR OUTLET RING	1	
	12	EHNE42MHB2W	MOTOR HEATER BLOCK	1	B2-PLUG,INCLUDE 2 INSULATION TUBES
	12	EHNE42MHS3W	MOTOR HEATER BLOCK	1	S3-PLUG,INCLUDE 2 INSULATION TUBES
	13	EHNE42AIRHW	AIR INLET RING	1	
	14	EHNE42RCSW	REAR COVER	1	
	15	EHNE42T3080W	TAPPING SCREW 3*8	2	FOR POWER CORD RETAINER *1
	16	EHNE42PCRBW	POWER CORD RETAINER	1	
	-	EHNE42S03W	INSTRUCTION BOOKLET	1	
	-	EHNE4261501W	INDIVIDUAL PACKAGE	1	FOR 615 CODE (INDIA)
	-	EHNE4264501W	INDIVIDUAL PACKAGE	1	FOR 645 CODE (VIETNAM)
	-	EHNE4265501W	INDIVIDUAL PACKAGE	1	FOR 655 CODE (MALAYSIA)
	-	EHNE4268501W	INDIVIDUAL PACKAGE	1	FOR 685 CODE (S'PORE,HONG KONG,KUWAIT,UA E)