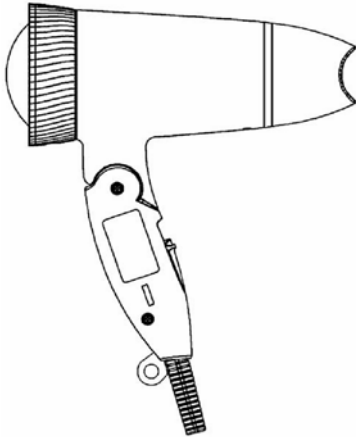


Service Manual

Hair Dryer

Model No. EH-ND51

TAIWAN



⚠ WARNING

This service information is designed for experienced repair technicians only and is not designed for use by the general public. It does not contain warnings or cautions to advise non-technical individuals of potential dangers in attempting to service a product. Products powered by electricity should be serviced or repaired only by experienced professional technicians. Any attempt to service or repair the product or products dealt with in this service information by anyone else could result in serious injury or death.

IMPORTANT SAFETY NOTICE

There are special components used in this equipment which are important for safety. These parts are marked by ⚠ in the Schematic Diagrams, Circuit Board Diagrams, Exploded Views and Replacement Parts List. It is essential that these critical parts should be replaced with manufacturer's specified parts to prevent shock, fire or other hazards. Do not modify the original design without permission of manufacturer.

TABLE OF CONTENTS

| | PAGE | PAGE |
|--|------|------|
| 1 Warning | 2 | |
| 2 Specifications | 2 | |
| 3 Troubleshooting Guide | 3 | |
| 4 Disassembly and Assembly Instructions | 4 | |
| 5 Wiring Connection Diagram | 10 | |
| 6 Schematic Diagram | 11 | |
| 7 Exploded View and Replacement Parts List | 12 | |

Panasonic

© Panasonic Electric Works Co., Ltd. 2011.
All rights reserved. Unauthorized copying and distribution is a violation of law.

1 Warning

Caution:

- Pb free solder has a higher melting point than standard solder; Typical the melting point is 50 - 70°F (30 - 40°C) higher. Please use a soldering iron with temperature control and adjust it to 750 ± 20°F (400 ± 10°C). In case of using high temperature soldering iron, please be careful not to heat too long.
- Pb free solder will tend to splash when heated too high (about 1100°F / 600°C).

2 Specifications

| | | | |
|---|---------|-------|---------------------|
| Power source | AC110 V | 60 | Hz |
| Power consumption | | 1200 | W |
| Air volume with attachmant | | 1.00 | m ³ /min |
| Air flow temperature (Mode 3) (in case of room temperature 30°C) | | 120 | °C |
| Cord length | A2 Plug | 1.875 | m |
| Weight (without power cord and nozzle) | | 330 | g |

3 Troubleshooting Guide

Refer to WIRING CONNECTION DIAGRAM.

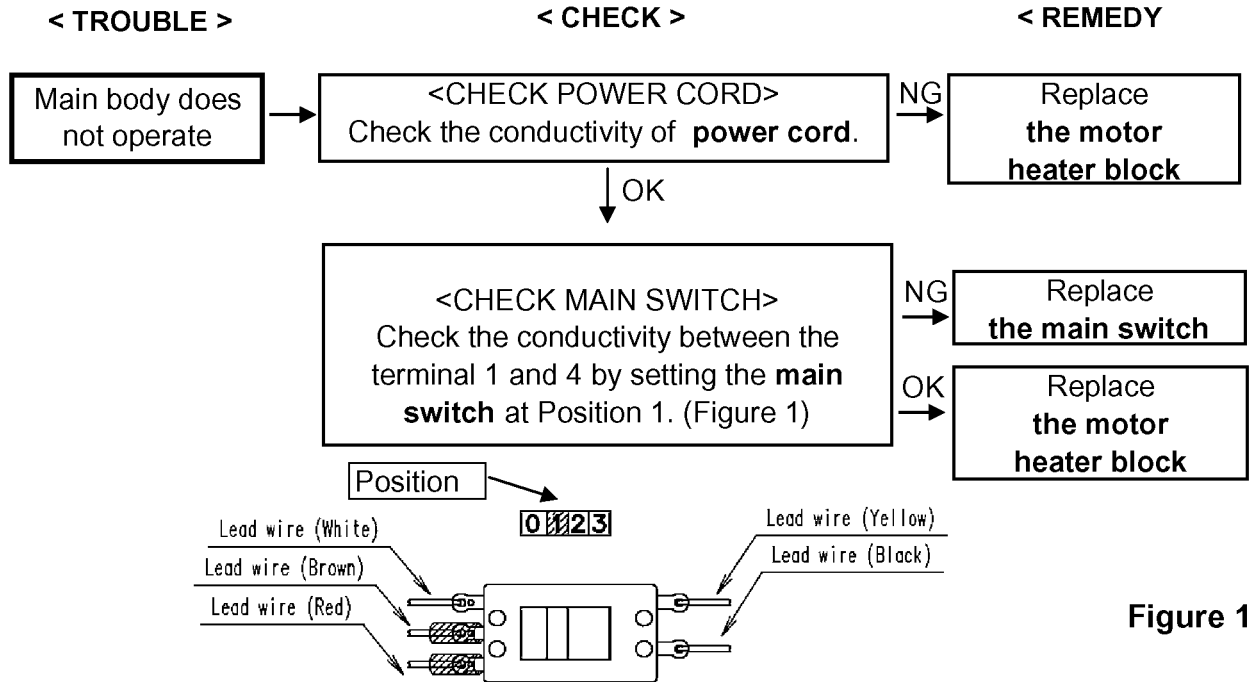


Figure 1

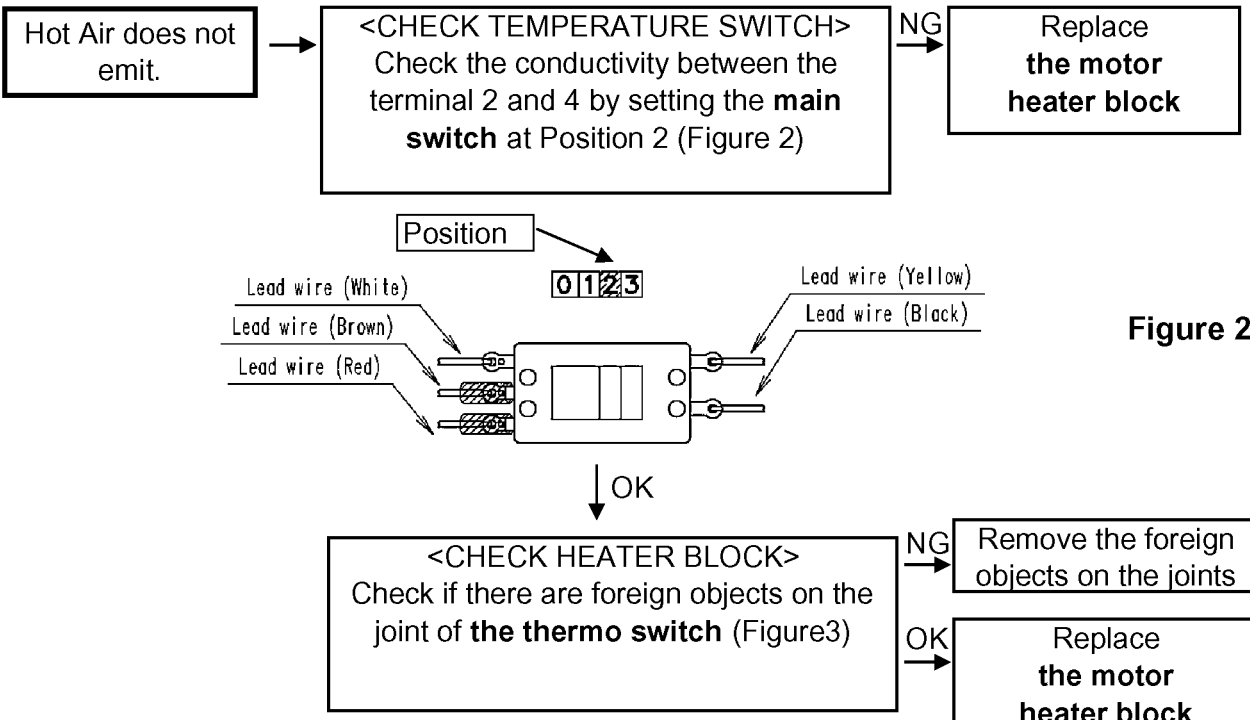


Figure 2

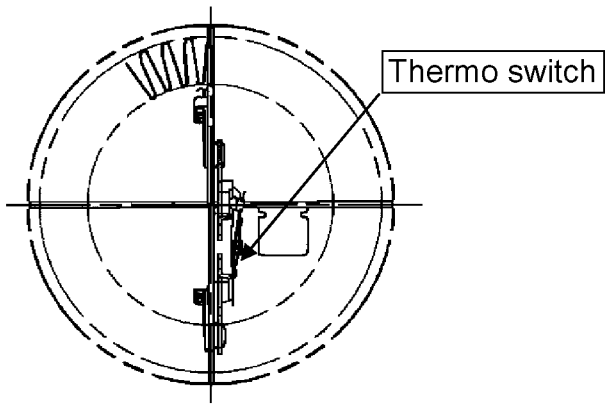


Figure 3

4 Disassembly and Assembly Instructions

4.1. Disassembly instruction

1. Take off nozzle as same direction in figure 4.

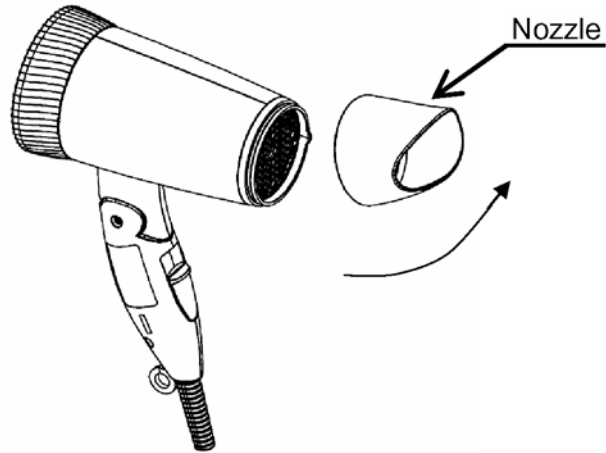


Figure 4

2. Remove tapping screws by Plus Driver and 2 torx screws by IEC driver as figure 5.

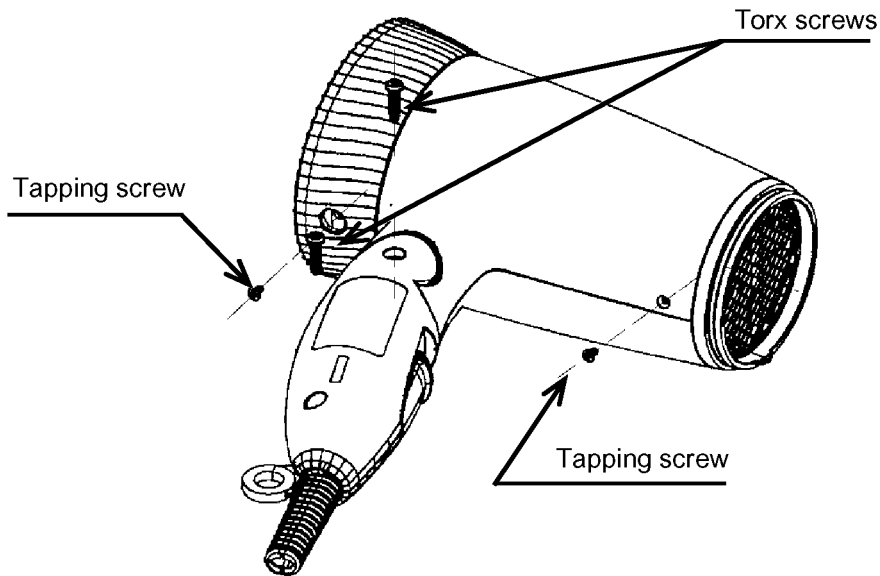


Figure 5

3. Take off an air outlet grill and an air outlet ring by rotating.
Take off an air inlet ring by rotating, then pulling a rear cover as figure 6.

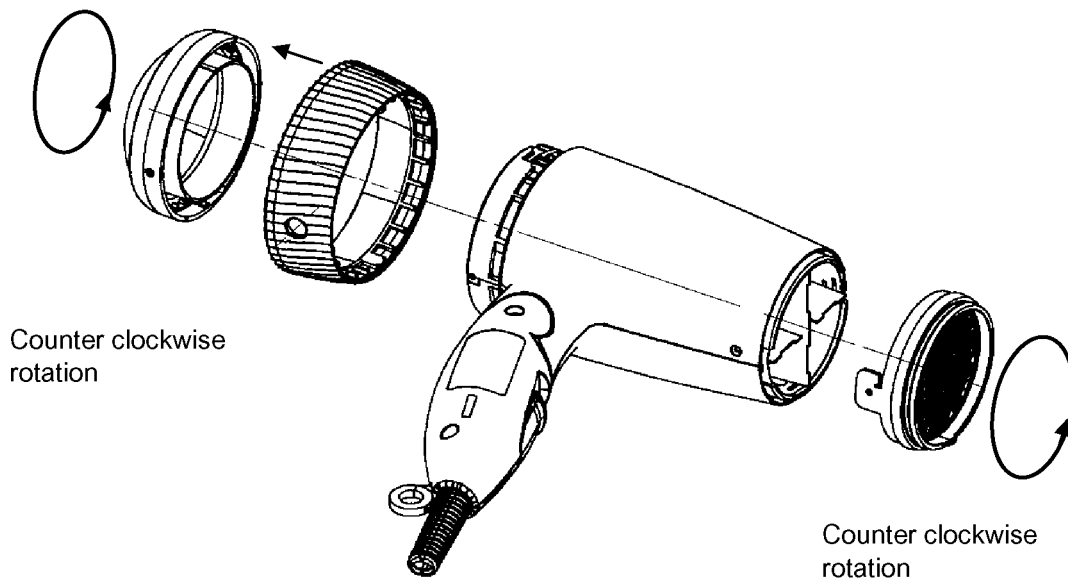


Figure 6

4. Take off a handle A from housing A and B as figure 7.

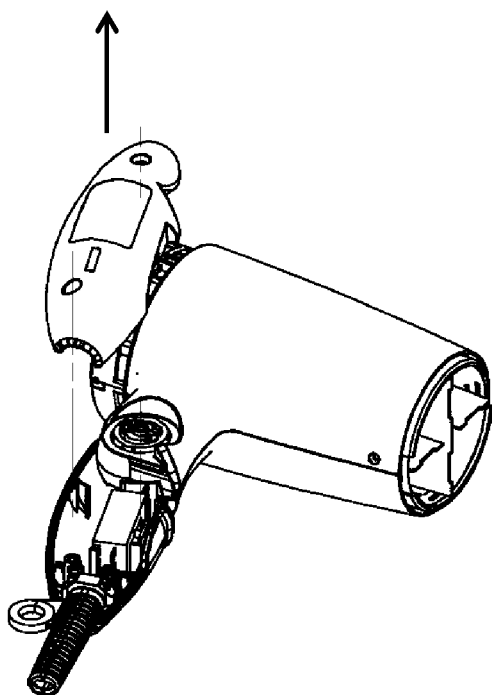


Figure 7

5. Take off a housing A from a housing B as figure 8.
Then remove tapping screws and a power cord retainer from handle B as figure 8.

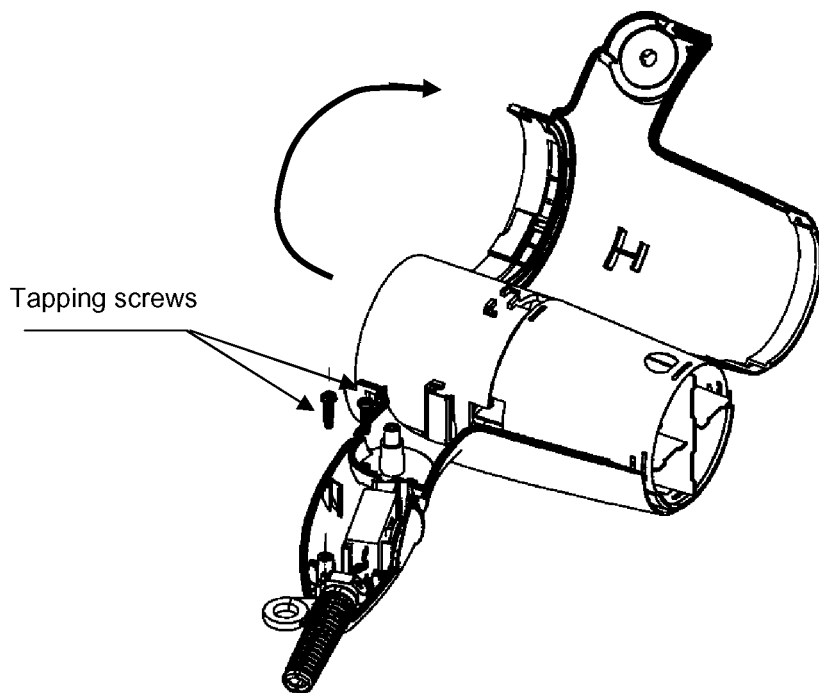


Figure 8

6. Take off a motor heater block from a housing B as figure 9.

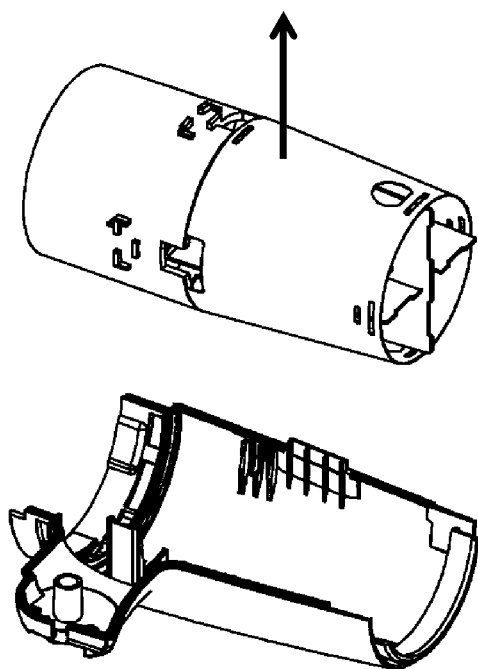


Figure 9

4.2. Assembly instruction

1. Install leadwire Black, Yellow, Brown, White and lead wire brown (from power cord) with a main switch and a capacitor as figure 10.

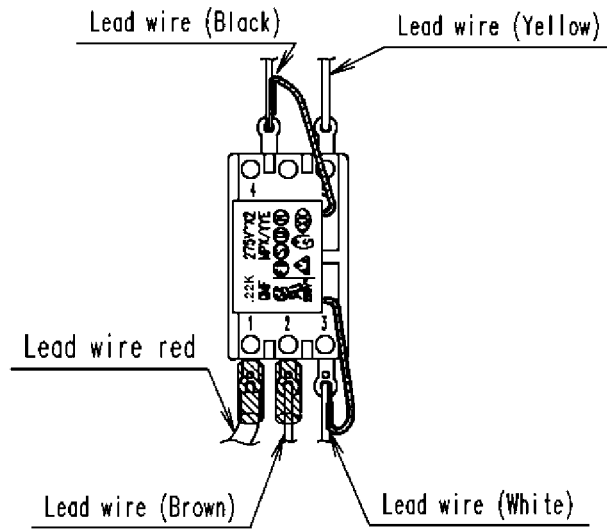


Figure 10

2. Connecting and soldering a motor heater block with a main switch as figure 11.

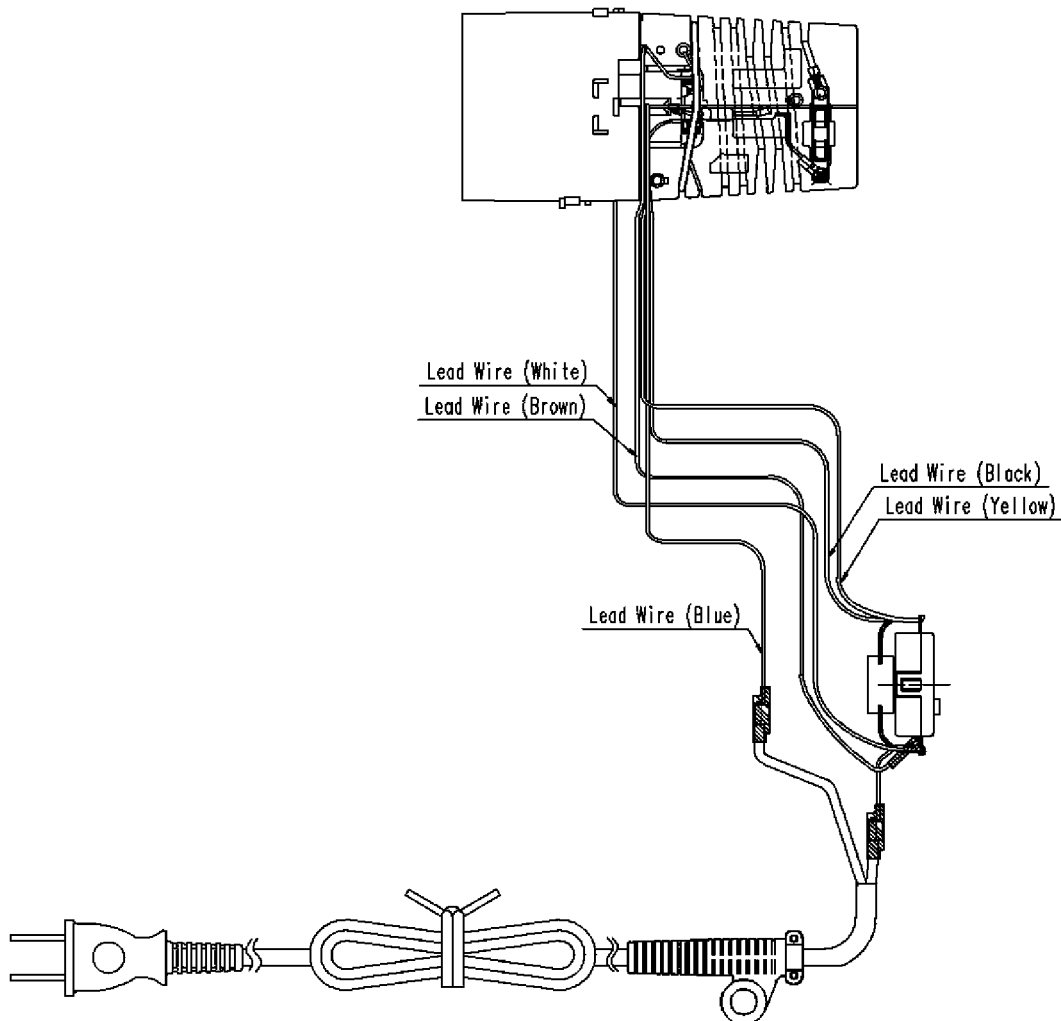


Figure 11

3. Assemble motor heater block with handle B and housing B as figure 12.

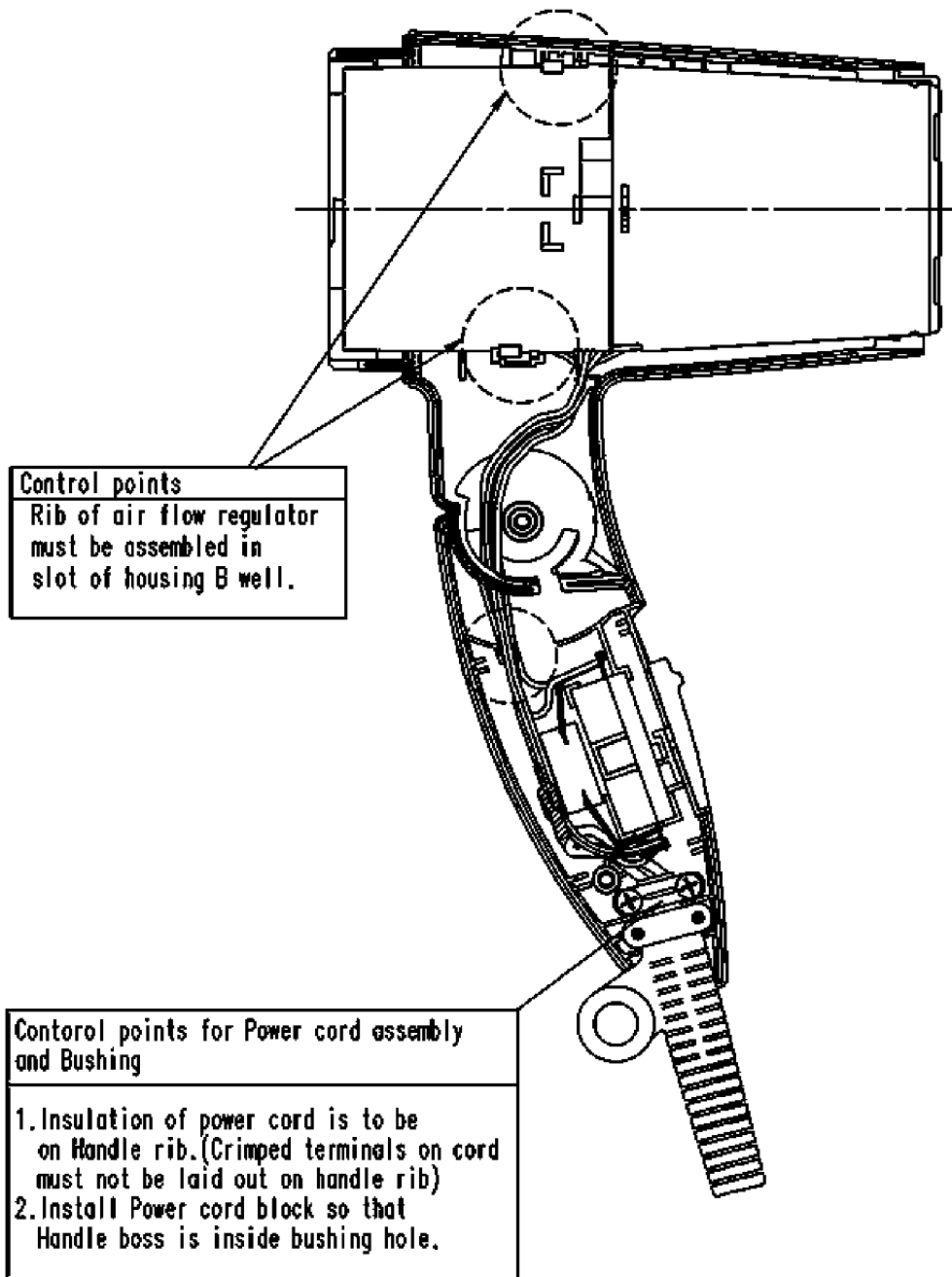


Figure 12

4. Assembly handle A , screw and nozzle as shown figure 13.

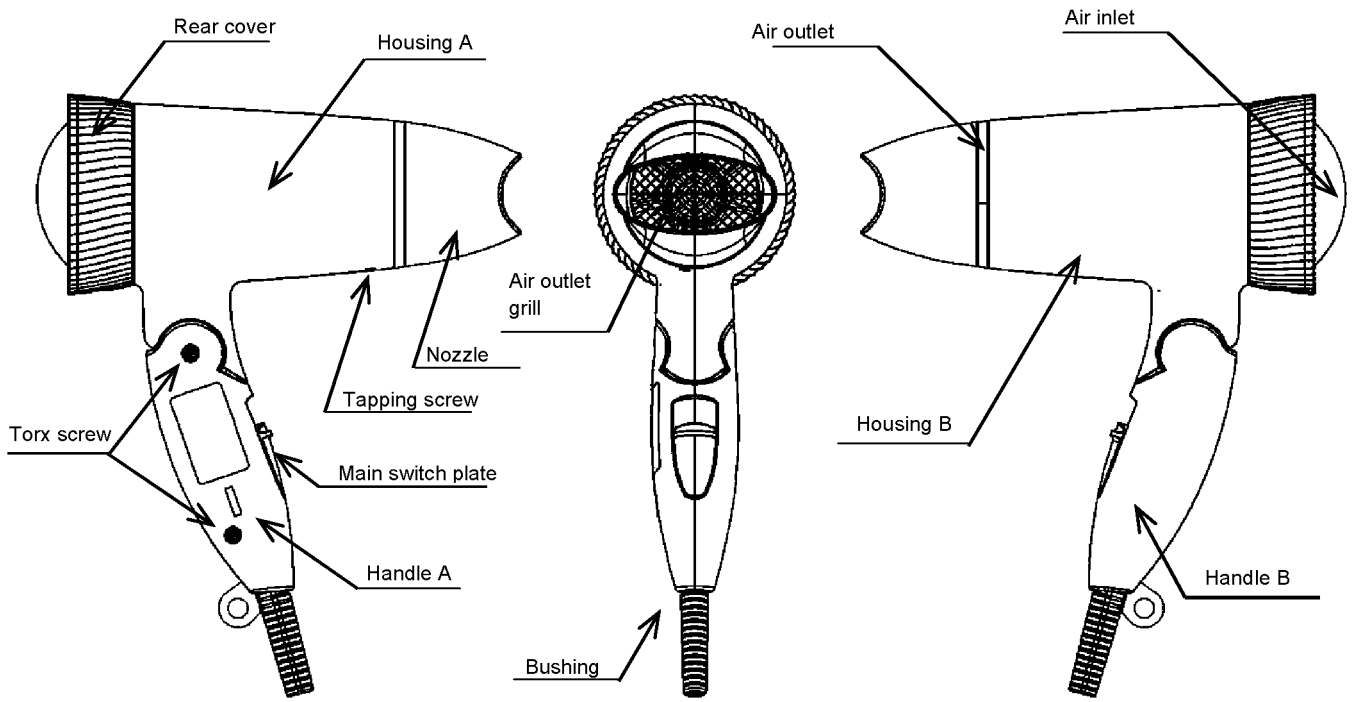


Figure 13

5 Wiring Connection Diagram

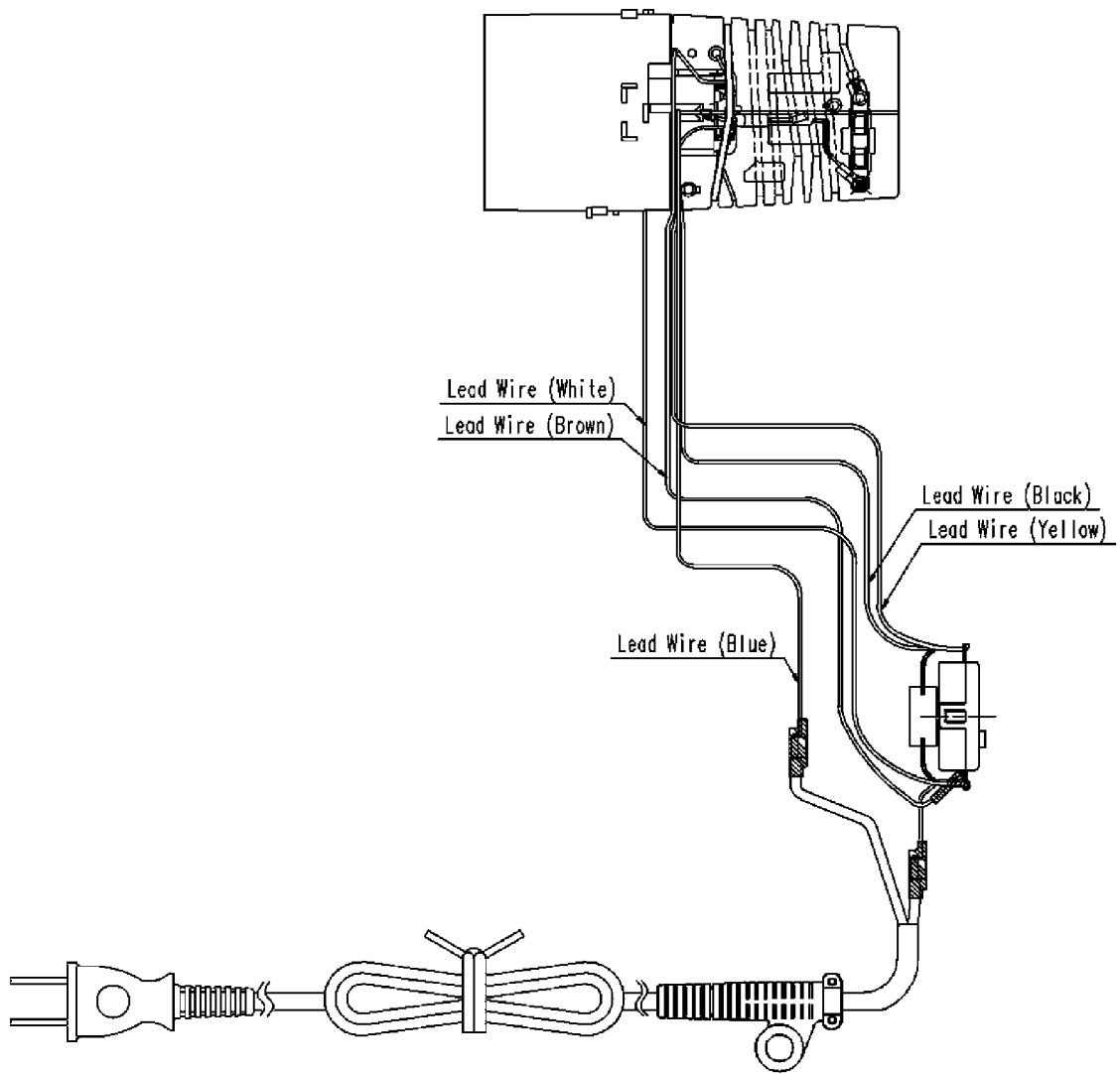


Figure 14

6 Schematic Diagram

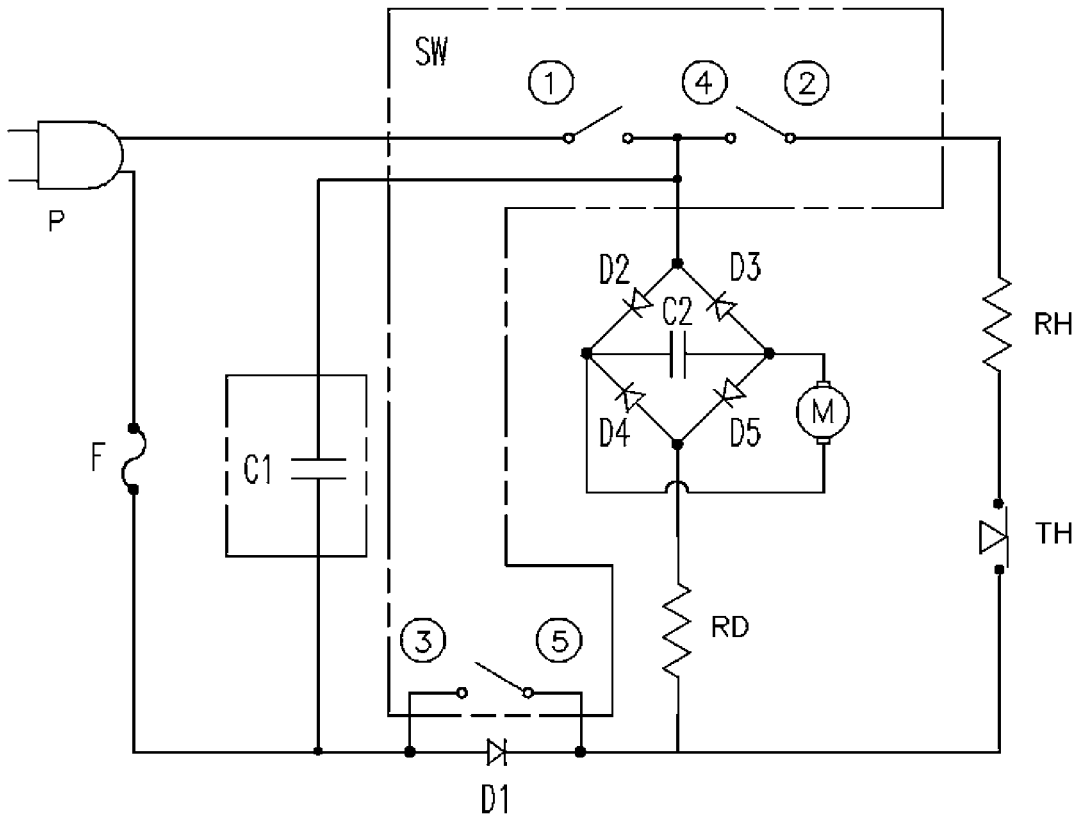


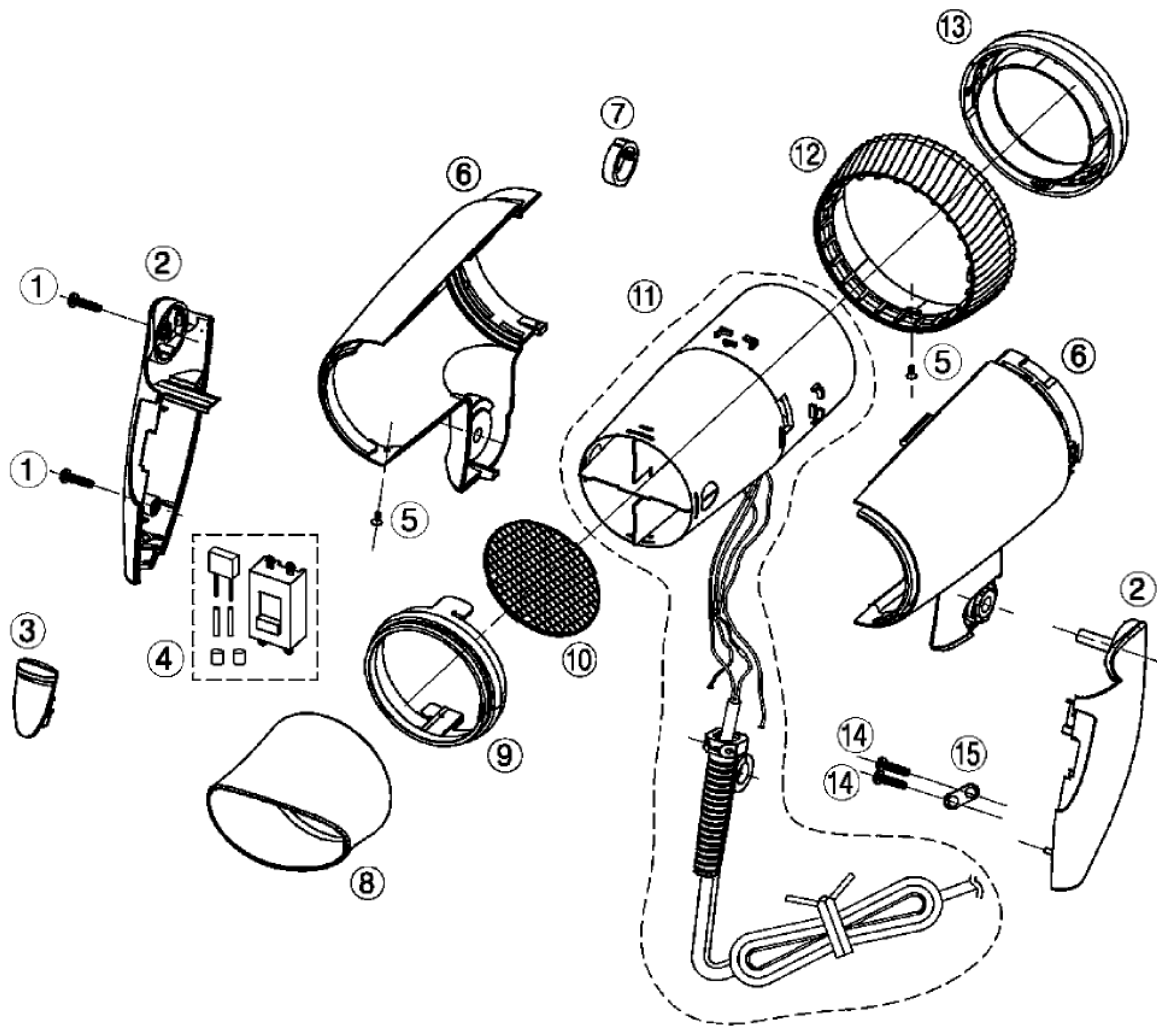
Figure 15

| Mode | 1~4 | 2~4 | 3~5 |
|------|-----|-----|-----|
| 0 | X | X | X |
| 1 | ○ | X | X |
| 2 | ○ | ○ | X |
| 3 | ○ | ○ | ○ |

| Component | | Specifications |
|-------------|-------------------------------|-----------------------------------|
| Symbol | Description | EH-ND51 (110 V) |
| | | Code 135 |
| C1 | Capacitor (Noise suppression) | 0.22 μ F , 275 Vac |
| C2 | Capacitor (Motor) | 0.22 μ F , 100 Vdc |
| RH | Heater coil | 10.3 \pm 0.5 Ω |
| RD | Voltage dropping resistor | 210.0 \pm 8.0 Ω |
| TH | Thermo switch | 120 \pm 5 $^{\circ}$ c |
| F | Temperature fuse | 15 A , 250 V , 142 $^{\circ}$ c |
| D1 | Diode | 1000 V , 7 A |
| D2,D3,D4,D5 | Rectifier diode | 600 V , 1 A |
| SW | Main switch | 250 V , 7.5 A / 125 V , 13.5 A |
| P | Power cord | |
| M | Motor | DC 24 V |

7 Exploded View and Replacement Parts List

Model No. : EH-ND51 Exploded View



Remarks : *1 Individual Available

All parts are supplied from PEW-Thailand through PLGA

Model No. : EH-ND51 Parts List

| Safety | Ref. No. | Part No. | Part Name & Description | Q'ty | Remarks |
|--------|----------|--------------|---------------------------------|------|---------------------------------------|
| | 1 | EHND51T0312W | TORX SCREW PTP 3*12 | 2 | FOR HANDLE AB *1 |
| | 2 | EHND51HDW1W | HANDLE AB (WHITE) | 1 | |
| | 3 | EHND51MSPWW | MAIN SWITCH PLATE (WHITE) | 1 | |
| | 4 | EHND51MS1W | MAIN SWITCH | 1 | INCLUDE CAPACITOR, 4 INSULATION TUBES |
| | 5 | EHND51T2005W | TAPPING SCREW 2.0*5 | 2 | FOR HOUSING AND REAR COVER *1 |
| | 6 | EHND51HSL1W | HOUSING AB (FLOWER META.BLUE) | 1 | FOR CODE A135 |
| | 6 | EHND51HSP1W | HOUSING AB (FLOWER META.PINK) | 1 | FOR CODE P135 |
| | 6 | EHND51HSS1W | HOUSING AB (FLOWER META.SILVER) | 1 | FOR CODE S135 |
| | 7 | EHND51SRTW | SWIVEL RING | 1 | |
| | 8 | EHND51NZLW | NOZZLE (TRANS.BLUE) | 1 | FOR CODE A135 |
| | 8 | EHND51NZPW | NOZZLE (TRANS.PINK) | 1 | FOR CODE P135 |
| | 8 | EHND51NZHW | NOZZLE (TRANS.GRAY) | 1 | FOR CODE S135 |
| | 9 | EHND51AORW | AIR OUTLET RING | 1 | |
| | 10 | EHND51AOGW | AIR OUTLET GRILL | 1 | |
| | 11 | EHND51MHA2W | MOTOR HEATER BLOCK | 1 | A2-PLUG,INCLUDE 2 INSULATION TUBES |
| | 12 | EHND51RCLW | REAR COVER (METALIC BLUE) | 1 | FOR CODE A135 |
| | 12 | EHND51RCPW | REAR COVER (METALIC PINK) | 1 | FOR CODE P135 |
| | 12 | EHND51RCSW | REAR COVER (METALIC SILVER) | 1 | FOR CODE S135 |
| | 13 | EHND51AIRWW | AIR INLET RING | 1 | |
| | 14 | EHND51T3080W | TAPPING SCREW 3*8 | 2 | FOR POWER CORD RETAINER *1 |
| | 15 | EHND51PCRBW | POWER CORD RETAINER | 1 | |
| | - | EHND5113503W | INSTRUCTION BOOKLET | 1 | |
| | - | EHND51135LW | INDIVIDUAL PACKAGE (BLUE) | 1 | FOR CODE A135 |
| | - | EHND51135PW | INDIVIDUAL PACKAGE (PINK) | 1 | FOR CODE P135 |
| | - | EHND51135SW | INDIVIDUAL PACKAGE (PINK) | 1 | FOR CODE S135 |