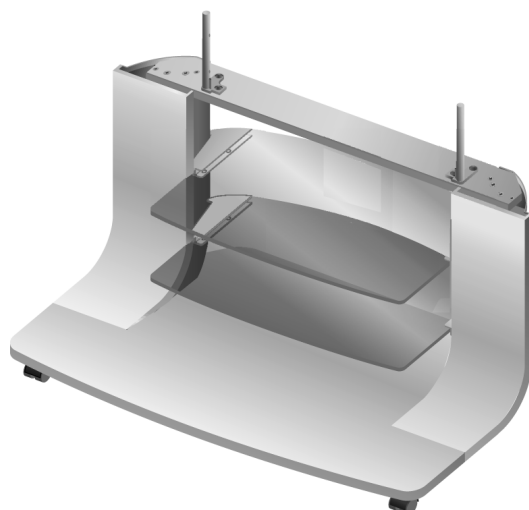


Service Manual

Stand for Plasma TV

TY-S37PA60W

TY-S42PA60W



Specifications

TY-S37PX60W

Dimensions (W × D × H)

main body	$37\frac{43}{64}$ " (957 mm) × $19\frac{13}{32}$ " (493 mm) × $24\frac{41}{64}$ " (626 mm)
with packing	$42\frac{43}{64}$ " (1084 mm) × $23\frac{17}{64}$ " (591 mm) × $11\frac{9}{64}$ " (283 mm)

Mass (weight)

main body	48.5lb (22 kg)
with packing	61.7lb (28 kg)

TY-S42PX60W

Dimensions (W × D × H)

main body	$41\frac{39}{64}$ " (1057 mm) × $19\frac{13}{32}$ " (493 mm) × $24\frac{41}{64}$ " (626 mm)
with packing	$46\frac{39}{64}$ " (1184 mm) × $23\frac{17}{64}$ " (591 mm) × $11\frac{9}{64}$ " (283 mm)

Mass (weight)

main body	52.9lb (24 kg)
with packing	63.9lb (30 kg)



WARNING

This service information is designed for experienced repair technicians only and is not designed for use by the general public. It does not contain warnings or cautions to advise non-technical individuals of potential dangers in attempting to service a product. Products powered by electricity should be serviced or repaired only by experienced professional technicians. Any attempt to service or repair the product or products dealt with in this service information by anyone else could result in serious injury or death.

CONTENTS

	Page		Page
1 Precautions with regard to setting up	3	3.1. Parts List	6
2 Assembling illustration of main parts	4	3.2. Exploded View	7
2.1. Please assemble the following in numerical order.	4	3.3. Packing summary	9
3 Replacement Parts List	6	4 External dimensions drawing	10

1 Precautions with regard to setting up

CAUTION

Do not use any the plasma TV other than those given in the catalogue.

- Otherwise the unit may fall over and become damaged, and personal injury may result.

Do not climb up on to the plasma TV or use it as a step.

- If the unit falls over or becomes damaged through misuse, injury may result.

Do not use it, when transformation and a crack take place to the stand or the glass.

- When it continues using it then, it may fall, or it may damage and personal injury may result.

Set up on a stable, level surface.

- Otherwise the unit may fall over and become damaged, and personal injury may result.

During setting-up, make sure that all screws are securely tightened.

- If sufficient care is not taken to ensure screws are properly tightened during assembly, the stand will not be strong enough to support the plasma TV, and it might fall over and become damaged, and personal injury may result.

Keep the unit away from direct sunlight and heating equipment.

- Failure to do so may result in warping, deformation, or degradation of materials, and a loss of strength that may cause the equipment to fall over or break and cause injury.

Two people are required to install and remove the plasma TV.

- If two people are not present, the plasma TV may be dropped, and personal injury may result.

Leave a space of at least 3 ¹⁵/₁₆ inches (100 mm) at the top, left and right, and at least 2 ⁴⁹/₆₄ inches (70 mm) at the rear of the plasma TV.

- The plasma TV has air outlet holes at the top and air intake holes at the bottom and rear. These holes must not be covered, otherwise fire may result.

Do not lubricate the caster in the stand.

- If the unit falls over or becomes damaged through misuse, injury may result.

Do not damage the glass.

- The Glass is tempered glass. If the unit becomes damaged through misuse, injury may result.

Do not damage it by the sharp thing. A crack advances and glass may be automatically damaged, if you use it for a long period of time after the crack has entered.



CAUTION

This stand intended for use only with Panasonic Plasma TV Models. See apparatus instructions. Use with other models is capable of resulting in instability causing possible injury.

Models

TY-S37PA60W: TH-37PA60 Series.

TY-S42PA60W: TH-42PA60 Series, TH-42PD60 Series.

Notes on handling

1) Cleaning

Wipe the surfaces with a soft, dry cloth. If the unit is particularly dirty, clean it using a cloth soaked with water to which a small amount of neutral detergent has been added, and then wipe with a dry cloth.

Do not use products such as solvents, thinner or household wax for cleaning, as they can damage the surface coating.

(If using a chemically-treated cloth, follow the instructions supplied with the cloth.)

2) Do not attach sticky tape or labels, as they can make the surface of the Plasma TV dirty. Do not allow long-term contact with rubber, vinyl products or the like. (Doing so will cause deterioration.)

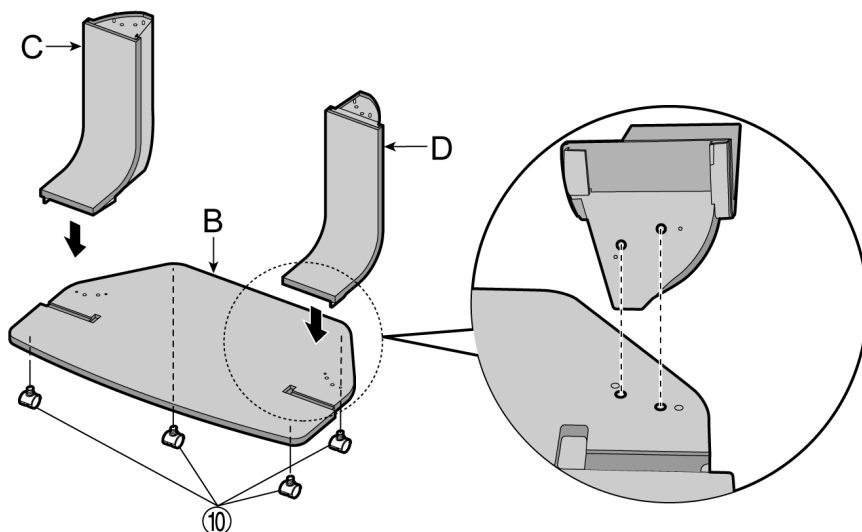
Points to note during installation

- Insert the mains plug for the plasma TV into a mains socket which is close and easily accessible.
- Provide adequate ventilation so that the temperature around the plasma TV does not rise above 40°C (104 °F). If there is insufficient movement of the air inside the display, heat may build up inside the plasma TV and fire may result.

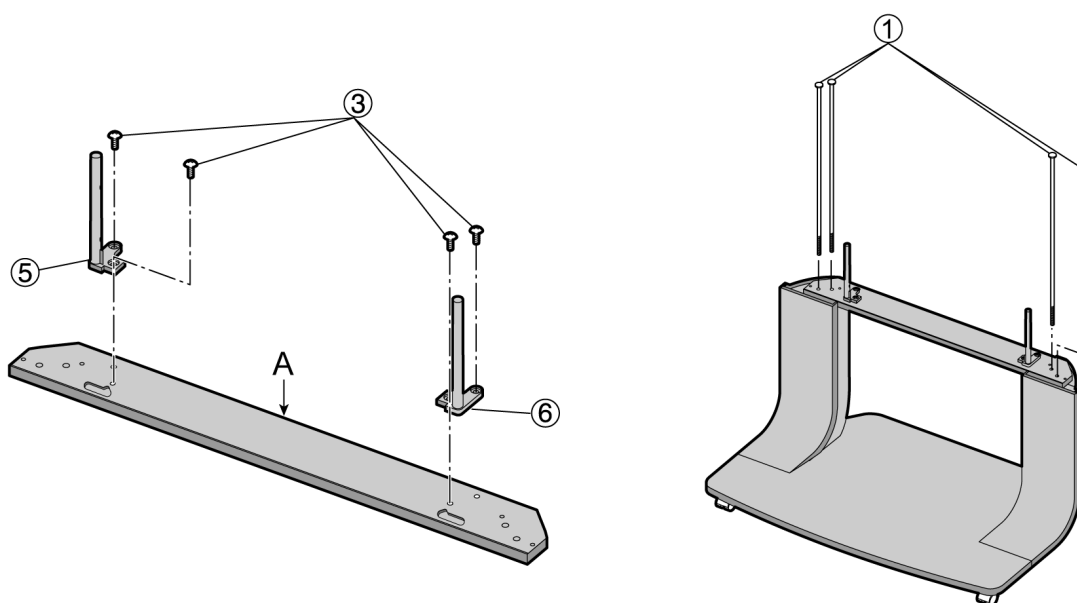
2 Assembling illustration of main parts

2.1. Please assemble the following in numerical order.

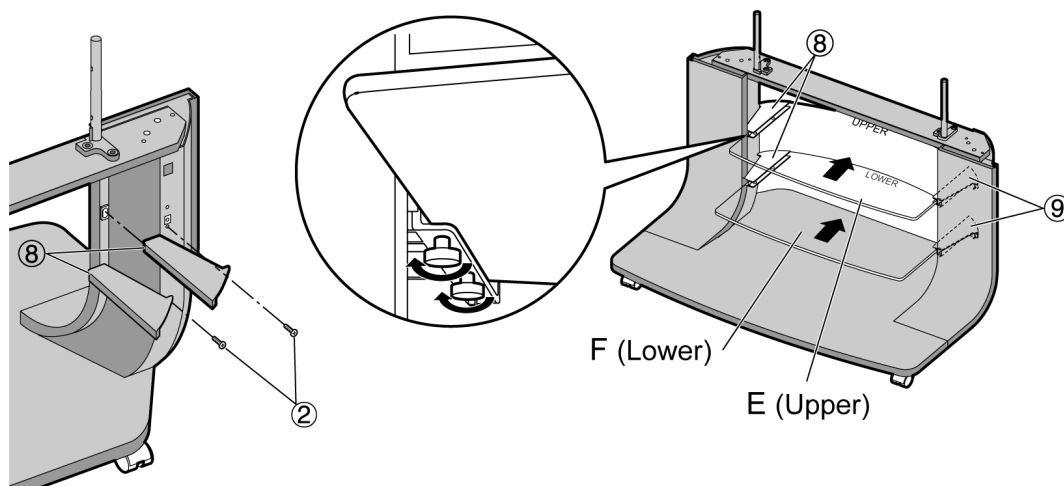
1



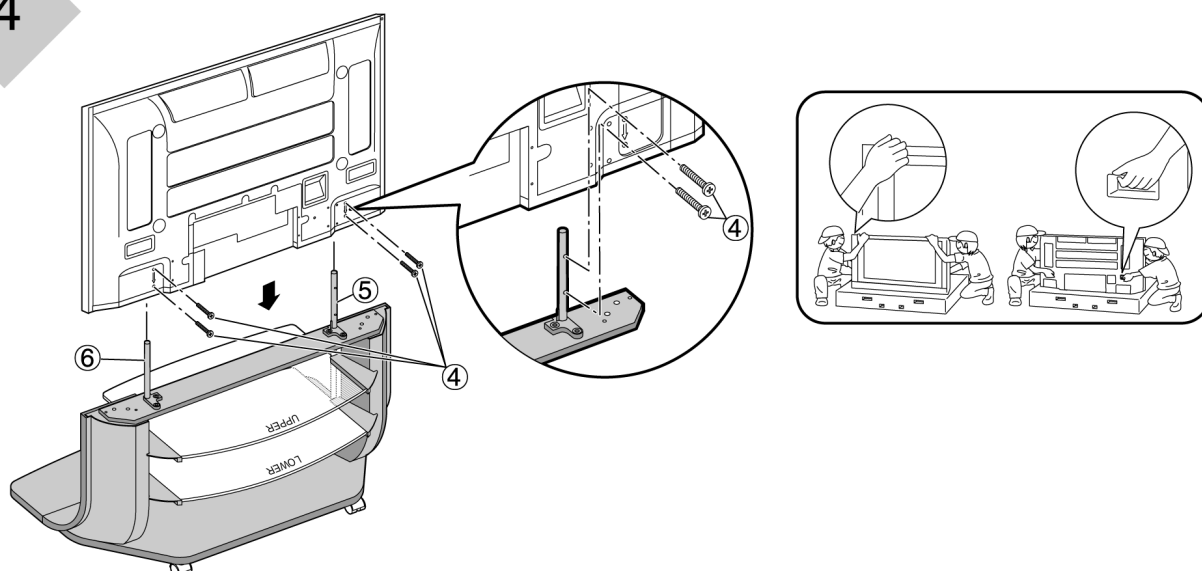
2



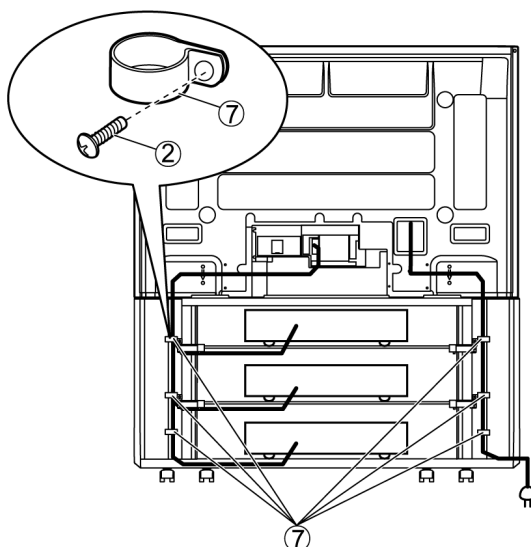
3



4



5



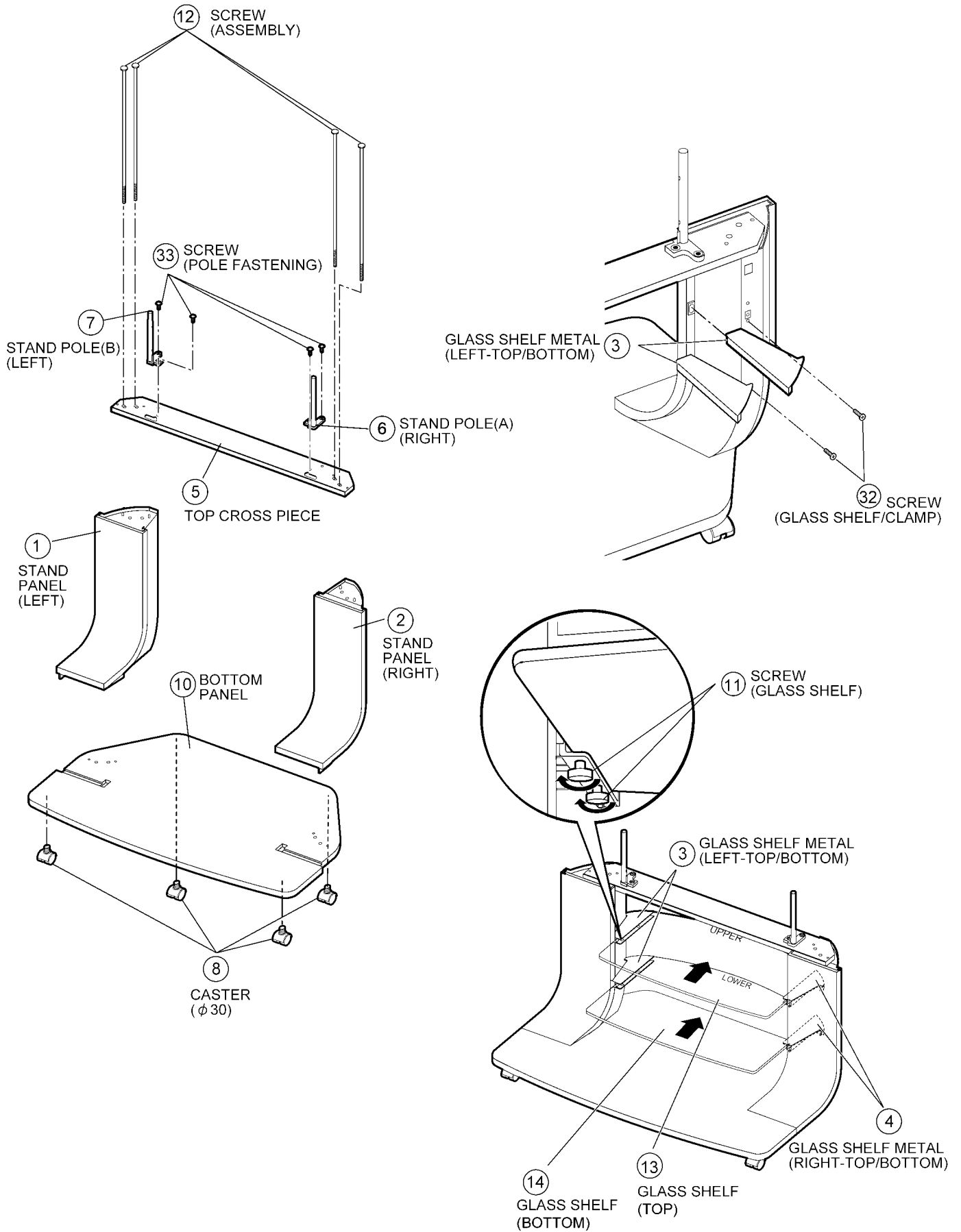
3 Replacement Parts List

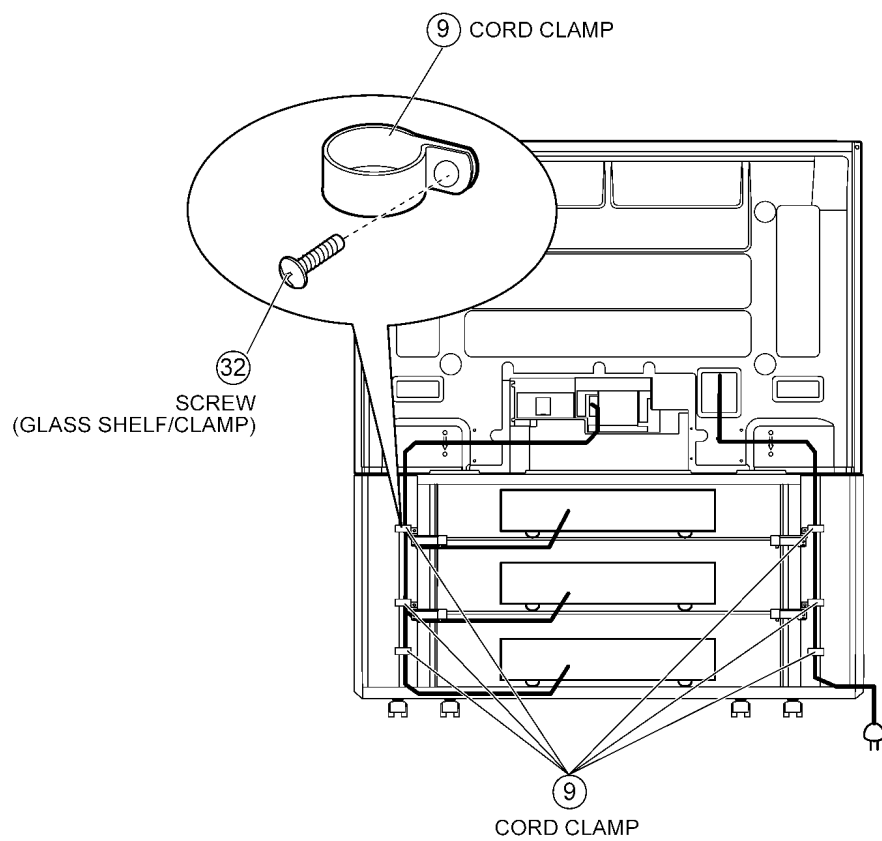
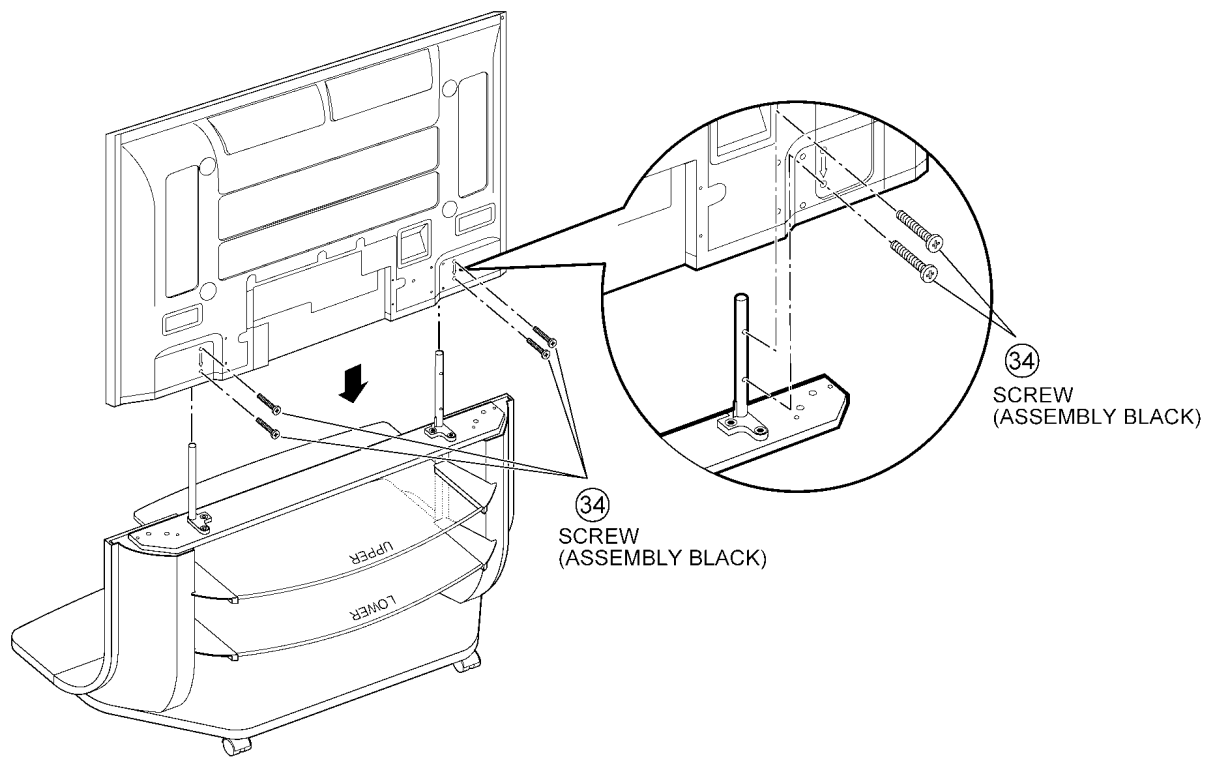
3.1. Parts List

TY-S37PA60W/S42PA60W

Ref. No.	Part No.	Part Name & Description	Pcs	Remarks
1	TBLA0157	SIDE PANEL (LEFT)	1	
2	TBLA0158	SIDE PANEL (RIGHT)	1	
3	TBLA0165	GLASS SHELF METAL (LEFT)	2	
4	TBLA0166	GLASS SHELF METAL (RIGHT)	2	
5	TBLA0216	TOP CROSS PIECE	1	TY-S37PA60W
5	TBLA0215	TOP CROSS PIECE	1	TY-S42PA60W
6	TBLA3348-1	STAND POLE (A) (RIGHT)	1	
7	TBLA3349-1	STAND POLE (B) (LEFT)	1	
8	TBLB3074-1	CASTER (ø30)	4	
9	TBLB3177	CORD CLAMP	6	
10	TBLH0610	BOTTOM BOARD	1	TY-S37PA60W
10	TBLH0609	BOTTOM BOARD	1	TY-S42PA60W
11	THEA102C	SCREW (GLASS SHELF)	8	
12	THEA144N	SCREW (ASSEMBLY)	4	
13	TKGA5283	GLASS SHELF (TOP)	1	TY-S37PA60W
13	TKGA5281	GLASS SHELF (TOP)	1	TY-S42PA60W
14	TKGA5284	GLASS SHELF (BOTTOM)	1	TY-S37PA60W
14	TKGA5282	GLASS SHELF (BOTTOM)	1	TY-S42PA60W
15	TPCB93401	PACKING CASE	1	TY-S37PA60W
15	TPCB93301	PACKING CASE	1	TY-S42PA60W
16	TPDA1156	CUSHION (FOUR CORNER)	1	
17	TPDA1158	CUSHION (SIDE PANEL)	2	
18	TPDA1159	CUSHION (SIDE PANEL BOX)	2	TY-S37PA60W
18	TPDA1157	CUSHION (SIDE PANEL BOX)	2	TY-S42PA60W
19	TPDA1174	CUSHION (PANEL BOX CENTER)	1	
20	TPDF1427	SIDE PANEL BOX	2	
21	TPDF1428	SIDE PANEL PAD	2	
22	TPDF1433	PROTECT PAD (BOTTOM)	1	TY-S37PA60W
22	TPDF1426	PROTECT PAD (BOTTOM)	1	TY-S42PA60W
23	TPDF1434	PROTECT PAD (TOP)	1	TY-S37PA60W
23	TPDF1429	PROTECT PAD (TOP)	1	TY-S42PA60W
24	TPDF1435	ACCESSORY BOX	1	TY-S37PA60W
24	TPDF1430	ACCESSORY BOX	1	TY-S42PA60W
25	TPDF1436	GLASS SHELF BOX	1	TY-S37PA60W
25	TPDF1431	GLASS SHELF BOX	1	TY-S42PA60W
26	TPDF1437	GLASS SHELF PAD	1	TY-S37PA60W
26	TPDF1432	GLASS SHELF PAD	1	TY-S42PA60W
27	TPEB232	TOP CROSS PIECE SHEET	1	
28	TPEB233	BOTTOM PANEL SHEET	1	
29	TPEB234	SIDE PANEL SHEET	2	
30	TPFD057105	PROTECT SHEET (BOTTOM)	1	
31	TQZH722	INSTRUCTION SHEET	1	
32	XSB4+12FJK	SCREW (GLASS SHELF/CLAMP)	10	
33	XST5+12FJ	SCREW (POLE FASTENING)	4	
34	XYN5+F35FJK	SCREW (ASSEMBLY BLACK)	4	
35	XZB17X19C03	POLY BAG (PARTS)	1	
36	XZB50X20C03	POLY BAG (GLASS SHELF)	1	
37	XZB5X53C05	POLY BAG (SCREW)	1	

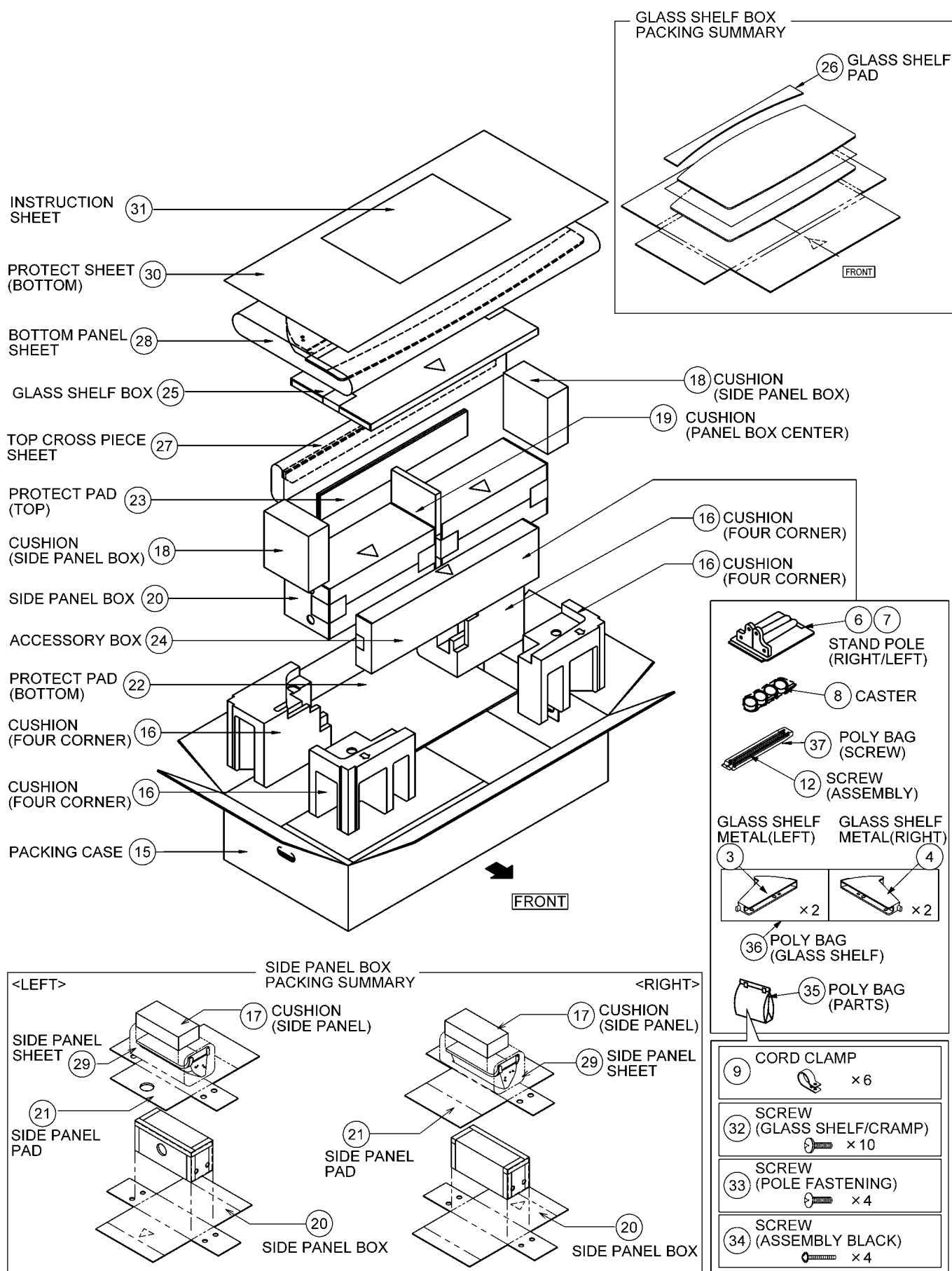
3.2. Exploded View





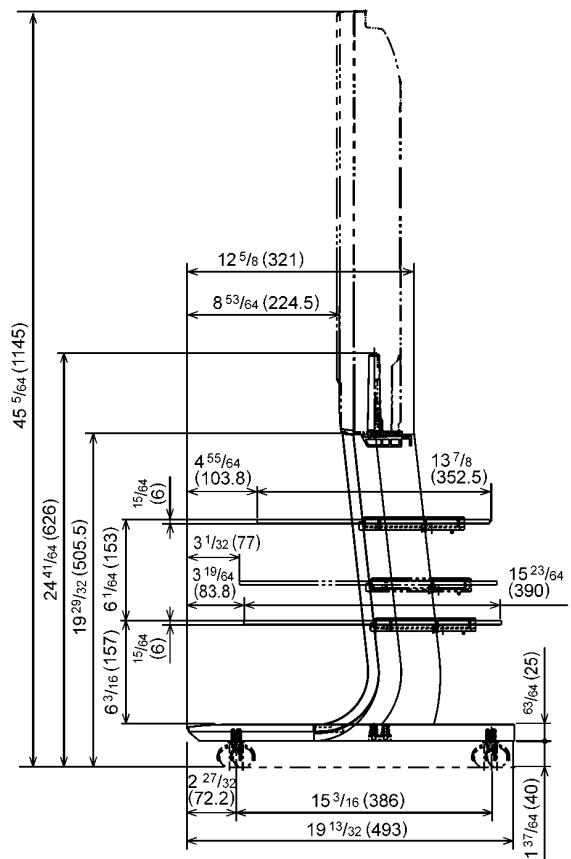
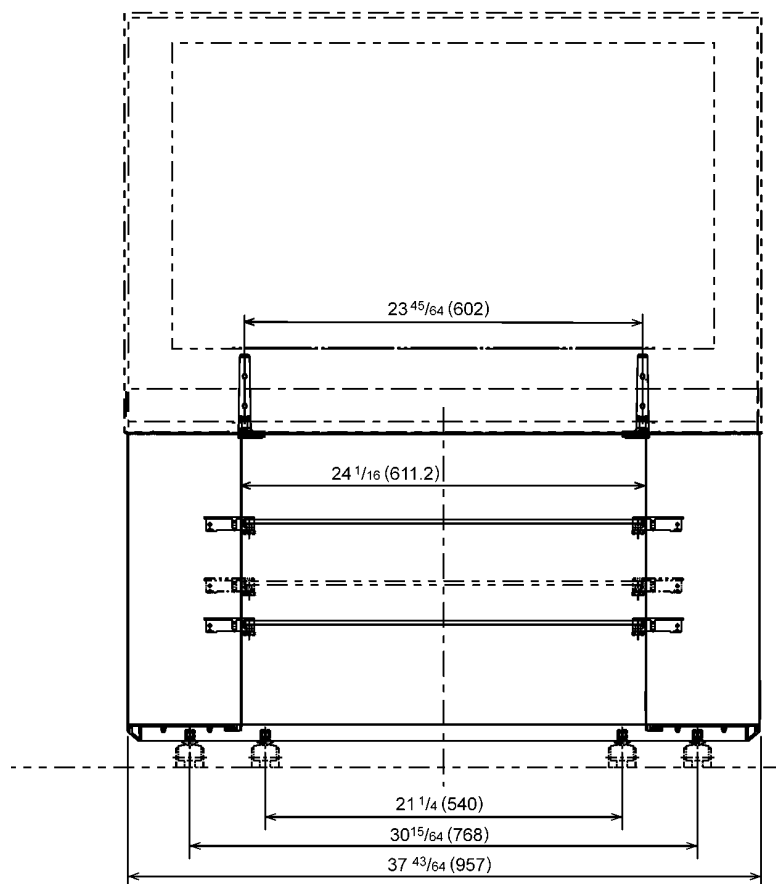
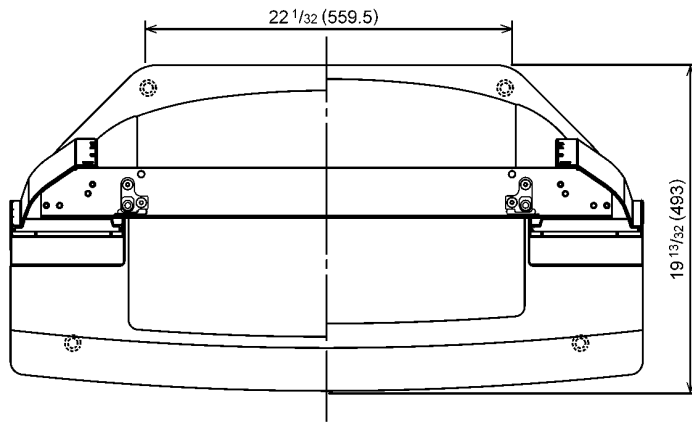
3.3. Packing summary

TY-S37PA60W, TY-S42PA60W



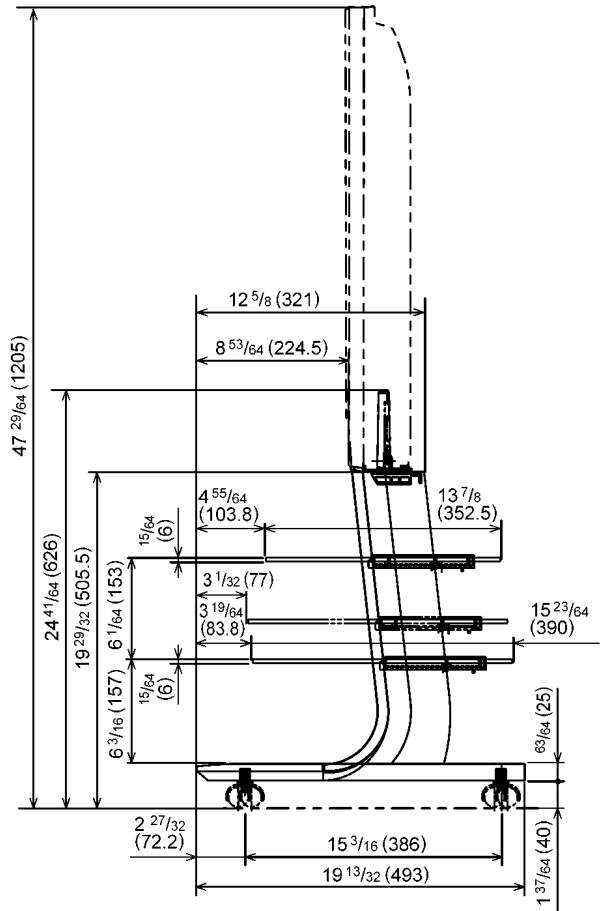
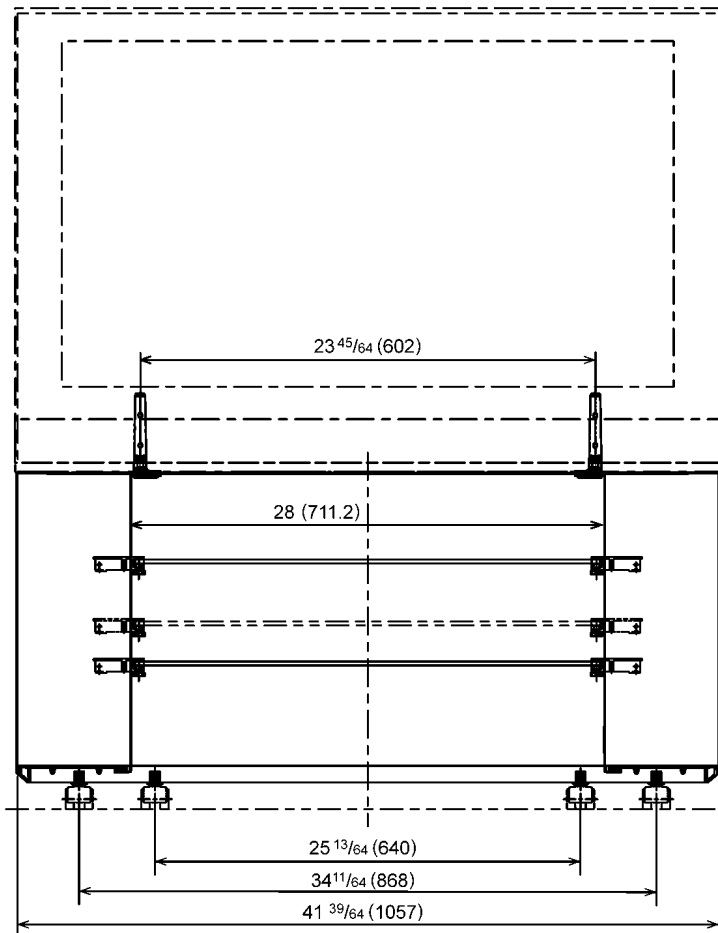
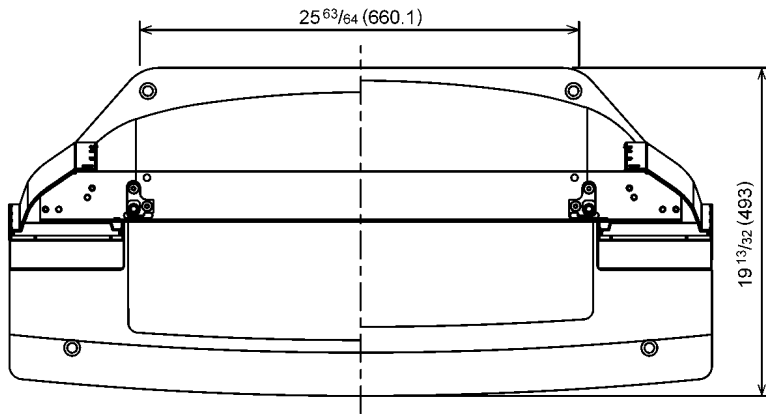
4 External dimensions drawing

S37PA60W



[Unit : inches (mm)]

S42PA60W



[Unit : inches (mm)]