

Service Manual

SD Card / Hard Disk Video Camera

Model No. **SDR-H80P**

SDR-H80PC

SDR-H80EG

SDR-H80EE

SDR-H80EB

SDR-H80EP

SDR-H80EF

SDR-H80EC

SDR-H80GC

SDR-H80GN

SDR-H80GJ

SDR-H80GK

SDR-H80PU

SDR-H80PR

SDR-H81EE

SDR-H81EB



Subject : Change the parts No. of SUB P.C.B.

Please use this service manual together with the service manual for Order No. VM0812041CE.

WARNING

This service information is designed for experienced repair technicians only and is not designed for use by the general public. It does not contain warnings or cautions to advise non-technical individuals of potential dangers in attempting to service a product. Products powered by electricity should be serviced or repaired only by experienced professional technicians. Any attempt to service or repair the product or products dealt with in this service information by anyone else could result in serious injury or death.

Panasonic®

© Panasonic Corporation 2009 Unauthorized copying and distribution is a violation of law.

TABLE OF CONTENTS

	PAGE	PAGE
1 INTORODUCTION -----	3	
2 REPLACEMENT PARTS LIST -----	3	
3 HOW TO DIFFERENTIATE-----	3	
4 ADJUSTMENT WITH SERVICE SOFTWARE-----	4	

1 INTORODUCTION

The SUB P.C.B. is changed by the part change of G-SENSOR.

The new SUB P.C.B. is compatible with a original SUB P.C.B..

However, it is necessary to adjust it with the service software after it exchanges SUB P.C.B..

2 REPLACEMENT PARTS LIST

INTERCHANGEABILITY CODE				See the I/C column on the following Part Number List													
Parts		Production		Parts		Production		Parts		Production		Parts		Production		E Addition	
A	Original	↗	Early	B	Original	→	Early	C	Original	↘	Early	D	Original	→	Early	F	Deletion
	New	↘	Late		New	↗	Late		New	→	Late		New	→	Late		G

4 ADJUSTMENT WITH SERVICE SOFTWARE

[1] Environment (PC)

Type: IBM PC/AT Compatible
OS: Windows 98SE / ME / 2000 / XP
CPU: Intel Pentium class or more.
Memory: Windows 98SE / Me: 64Mbyte or more. Windows 2000 / XP: 128Mbyte or more.
HDD: 3Mbyte or more.
PORT: USB serial port.
VGA: 800 * 600 / 256 colour or more.

(Software)

Except PC and measuring instruments.

- (1)Adjustment software for SDR-H80 series. Download from TSN-WEB.
(2)USB-SERIAL driver for adjustments. Download from TSN-WEB.

(Others)

Optics equipment.	Common for KDV2006 series.
Communications cable.	USB cable.
Measuring equipment.	Oscilloscope.

[2] How to setup the software and camera

This camera adjustment uses USB Serial-port. RS-232C Serial-port is not used.

Installation method of the USB-SERIAL driver (Panasonic DVC) used for adjustment

The USB driver for DVC is used.

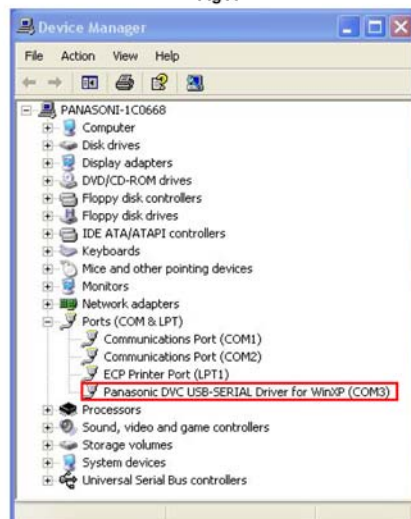
1. Download the "USB_COM.ZIP" file into your PC from TSN-WEB.
2. Please execute "Setup.exe" in "ComMass" folder. Install it according to the message.
3. Activate the camera following below procedures in order for the camera to communicate with PC.
 - 3-1. Turn the [Power SW] on.
 - 3-2. Set the normal record mode.
 - 3-3. "iA" and "OIS" button are pressing at the same time for three seconds or more while raising Joystick.
 - 3-4. If "COM" blinks under the LCD screen, it is OK.

(attention)

Please do the same operation without fail and release "COM communication mode" after completing the adjustment.
Even if the power supply is turned off, it is not released.

4. Connect the camera to PC with USB cable.
"USB-SERIAL Driver" is automatically installed. (This is the case of WindowsXP)
5. Confirm either the USB-SERIAL driver is properly installed or not by checking "System properties device manager" (Fig A).
After competing the drive installation.

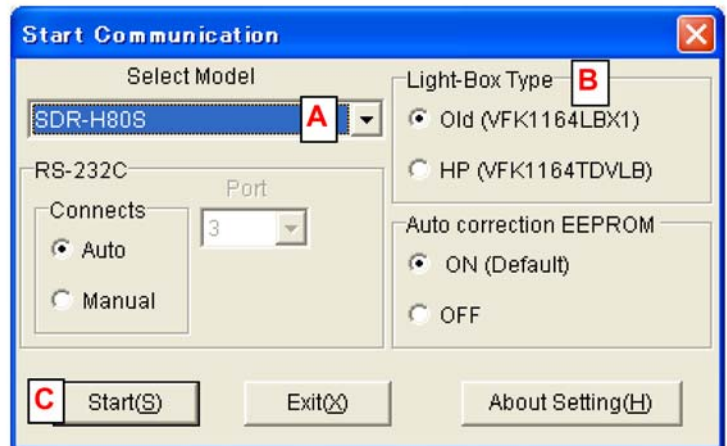
Fig A



COM-Number changes by the PC environment.

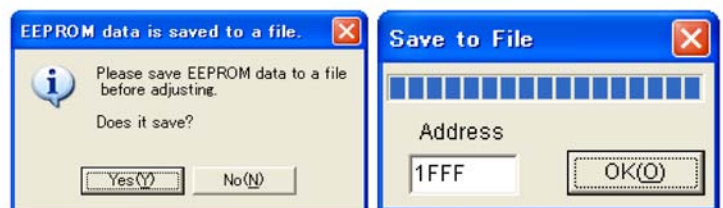
[3] Connect communication

- 1) Choose a model. [A]
- 2) Choose the light box to be used. [B]
- 3) Click the "Start" button. [C]



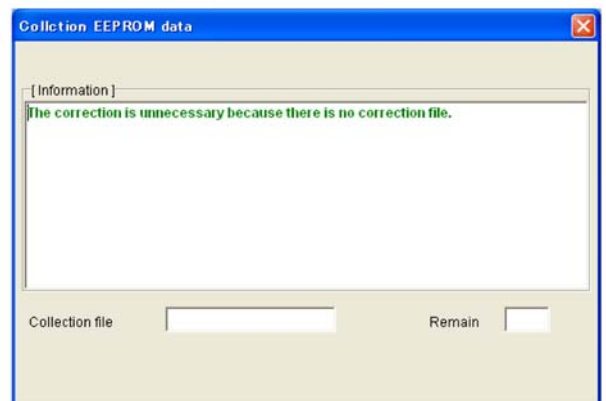
[4] Seve EEPROM data

- 1) When the communication connection completes the figure on the right is displayed.
- 2) Save with the file name currently displayed.
- 3) Click the [OK] button.



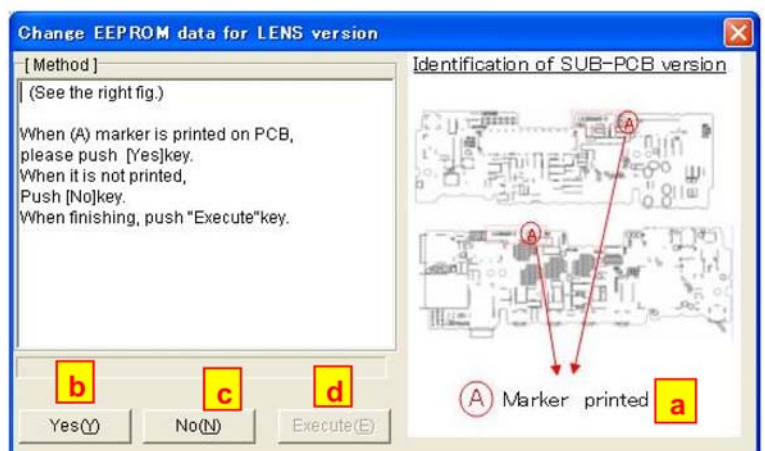
[5] Automatic EEPROM correction

The right figure is displayed when it corrects automatically.
Please follow the contents of a display.

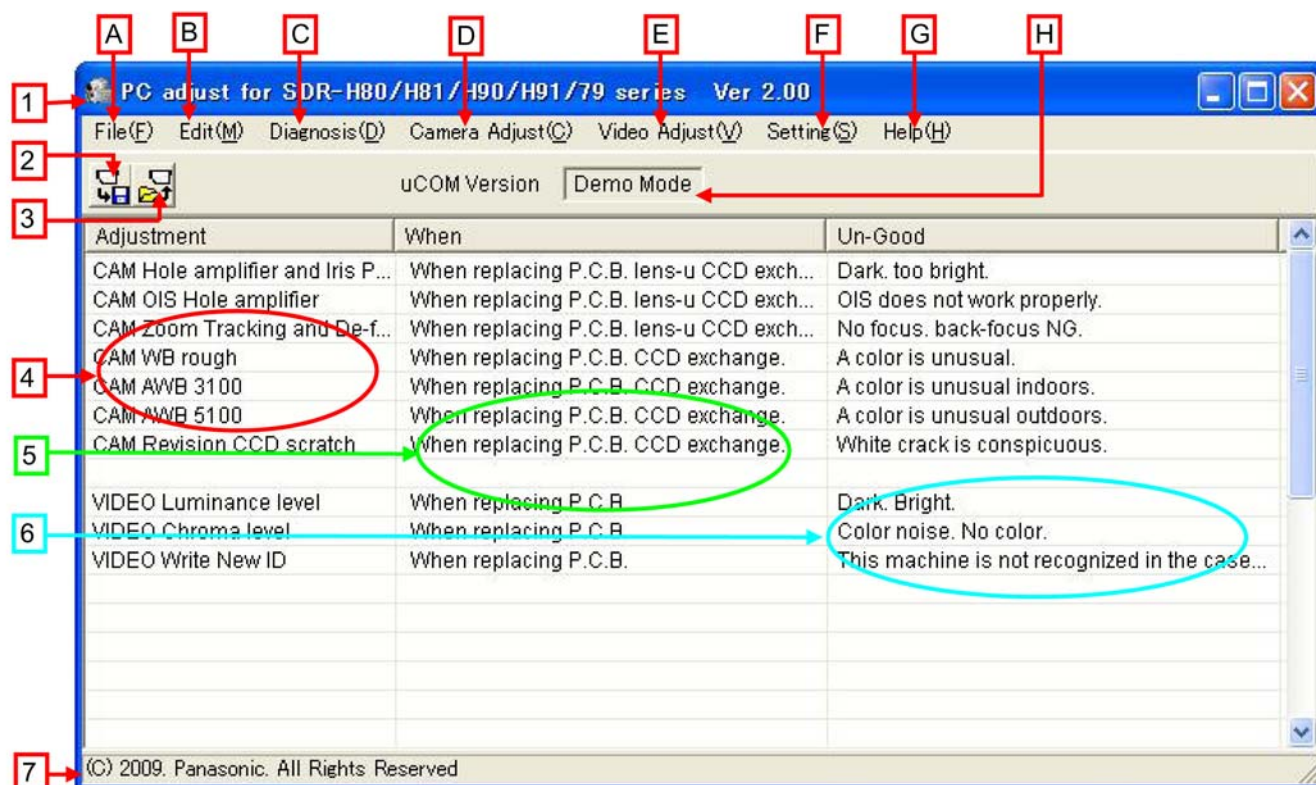


[6] Check and optimize of the SUB-PCB version

- 1) Check the SUB-PCB version
(Identification on SUB-PCB unit) [a]
- 2) When (A) marker is printed on PCB, push [Yes] key. [b]
When it is not printed, push [No] key. [c]
- 3) When finishing, push "Execute" key. [d]



[7] Main menu



1. Software name and a version.
2. Save EEPROM data to the file.
3. Write EEPROM data from the saved file.
4. Adjustment item list.
It can adjust, if it double-clicks.
5. When required.
6. When adjustment is imperfect.
7. Supplementary sentence etc.
8. EEPROM data save and writing.
- A. EEPROM data save and writing.
- B. Memory editor.
- C. Diagnostic functions.
- D. CAMERA adjustment.
- E. VIDEO Adjustment.
- F. Set a Calendar and clock.
- G. Open the this PDF.
- H. Main MPU-ROM version.

[8] Write EEPROM data.

The cautions in the case of writing data to EEPROM.

When there is no data which suits a CAMERA, the right figure displays.

If it writes compulsorily, a camera may break.

Especially when write other camera-data or initial value data, be careful.



[9] Edit

There are two kinds of editors. **Usually, do not use it.**

[10] Diagnosis

It is only an external control.

[11] Adjustment

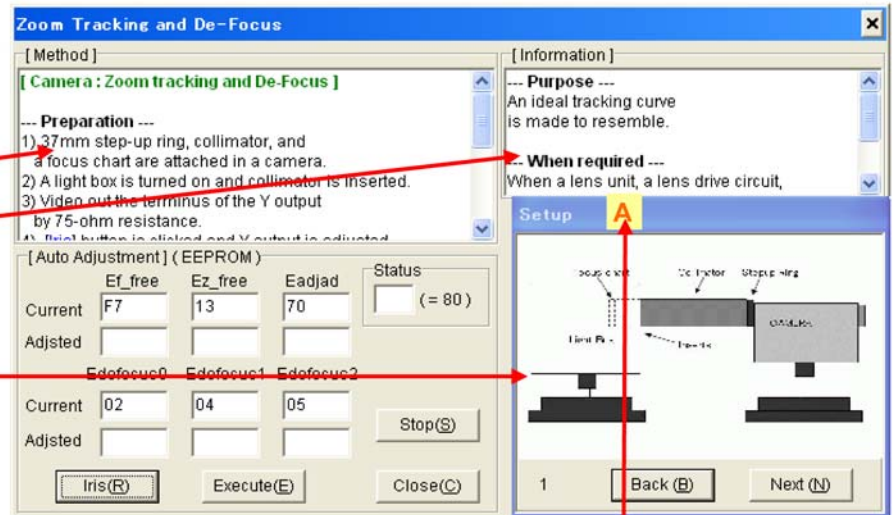
The typical example of adjustment.

Case-1: Automatic adjustment.

Adjusts according to a [method].

Since [information] is important, see well.

An setup figure, a waveform, etc. display on the lower right.



It will be expansion if [A] is double-clicked. And if it double-clicks again, it will return.

Note. The contents can be edited if a right click is carried out on the screen of [Method] and [information].

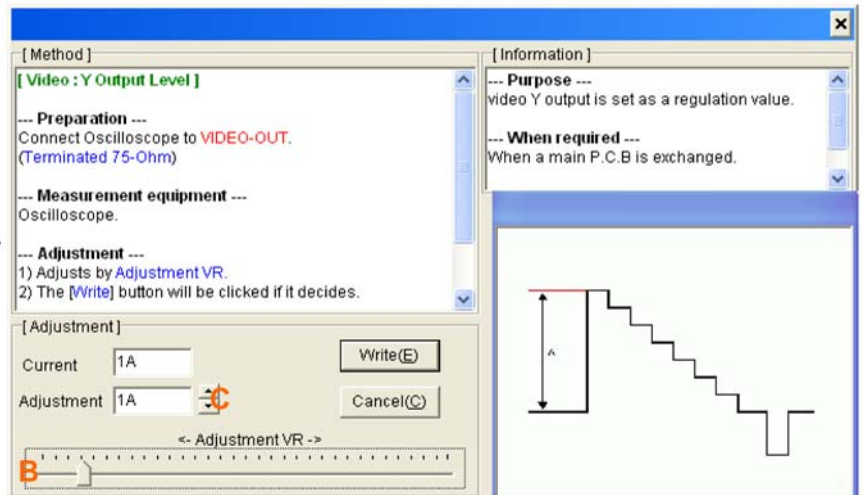
Case2: Manual adjustment.

[B] is dragged, or [C] is clicked and adjusted.

Please drag slowly.

It can adjust also by the cursor key, "Page Up", and the "Page Down" key.

Moreover, It can tune finely also with a mouse wheel.



[12] Trouble shoot (Symptom and remedy for Adjustmet Software usage)

CASE 1. The first communication connection is not succeeded.

- (1) Check whether the USB communication driver is installed correctly.
Mainly, the reason of this symptom is due to this problem.
In this case, see "[3]-1 important notice" noted above.
- (2) Check re-set it as maintenance mode.



CASE 2. Communication error occurs, even connection and setting seem to be ok.

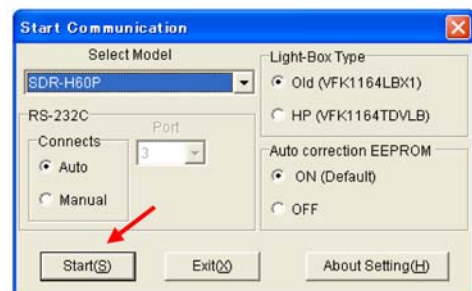
- (1) Quit or remove the stationing style software. (ex: Virus detection software etc...)
- (2) As to the low performance capability of PC. In this case, operate the PC slowly.

CASE 3. No response even click any buttons.

- (1) Leave PC for about three minutes and try to close pressing [Close] button.
If impossible, execute forced termination with pressing [Ctrl]+[Alt]+[Del] keys.

[13] Remarks

This software acts even if it is not connecting with the camera, when you crick the [Start] button while pressing the [Shift] key on the keyboard. It is useful for technical training etc.



End.